



GMV A/S '12

Winlet 400

A series of glazing robots with a full range of features - allowing you to build the Winlet 400 that fits your needs exactly.

- Fully hydraulic for optimal **durability and speed.**
- 100% linear movements of load at the front for optimal **precision.**
- Choice of wheel configuration for optimal accommodation to **work environment.**
- Load adjustment at the cup for optimal **control.**
- Intelligent overload monitoring system for optimal **safety.**
- Optimal **flexibility** in choice of proportional or multi axis control.

TECHNICAL SPECIFICATIONS - OVERVIEW

Find your perfect Winlet 400

Main Catalog:	MAX. LOAD ARM Out / In	MAX. SIDE MOUNTED LOAD	MIN/MAX EXTENSION* (Bumper to suction cups)	MAX LIFTING HEIGHT (Vertical cups)	MIN/MAX LIFTING HEIGHT (Horizontal cups down)	MIN/MAX LIFTING HEIGHT (Horizontal cups up)
Winlet 400CL SHB/HV Page 4	200 kg / 400 kg	200 kg	458 MM / 958 MM	2.663 MM	0 MM / 890 MM	2.670 MM / 3.078 MM
Winlet 400CL DHB/HV Page 8	60 kg / 315 kg	200 kg	590 MM / 1.590 MM	3.190 MM	0 MM / 910 MM	2.790 MM / 3.635 MM
Winlet 400CL SHB/HS Page 12	250 kg / 460 kg	200 kg	318 MM / 818 MM	-	-	2.530 MM / 2.938 MM
Winlet 400CL DHB/HS Page 16	110 kg / 400 kg	200 kg	450 MM / 1.450 MM	3.100 MM	0 MM / 1.065 MM	2.650 MM / 3.465 MM
Winlet 400CL DHB/HS/HR Page 20	110 kg / 400 kg	200 kg	450 MM / 1.450 MM	3.100 MM	0 MM / 1.065 MM	2.650 MM / 3.465 MM
Winlet 400TL SHB/HV Page 24	225 kg / 410 kg	200 kg	458 MM / 958 MM	2.663 MM	0 MM / 890 MM	2.670 MM / 3.078 MM
Winlet 400TL DHB/HV Page 28	85 kg / 345 kg	200 kg	590 MM / 1.590 MM	3.190 MM	0 MM / 910 MM	2.790 MM / 3.635 MM
Winlet 400TL SHB/HS Page 32	285 kg / 500 kg	200 kg	318 MM / 818 MM	2.573 MM	0 MM / 1.192 MM	2.530 MM / 2.938 MM
Winlet 400TL DHB/HS Page 36	130 kg / 415 kg	200 kg	450 MM / 1.450 MM	3.100 MM	0 MM / 1.065 MM	2.650 MM / 3.465 MM
Winlet 400TL DHB/HS/HR Page 40	130 kg / 415 kg	200 kg	450 MM / 1.450 MM	3.100 MM	0 MM / 1.065 MM	2.650 MM / 3.465 MM

*Horizontal lifting arm.

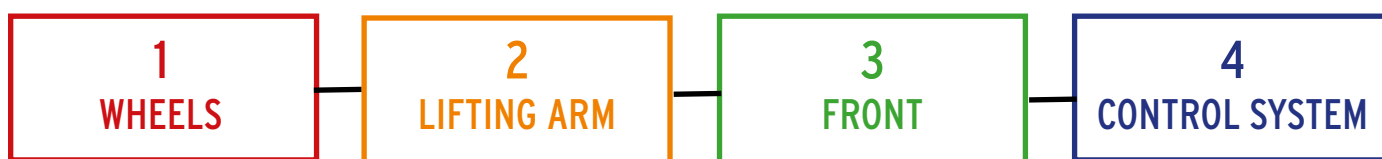
How to build your Winlet 400

The Winlet 400 series from GMV is of a range of state-of-the-art glazing robots lifting up to 500 kg. designed to meet all needs during window- and glass installations. In this series of vacuum lifts the vital parts of the machine are custom made to make sure you get exactly the Winlet 400 you need for your projects.

When building your Winlet 400 you go through 4 steps each of which is a configuration group where you have two different options. Which of those options you choose will depend on the type of installation you are doing and in what kind of environment.

These are the 4 configurations you go through when building your Winlet 400.

Choose between two types of:



Take a look at the product key on the next page for more detailed information of the different options within the configurations.

Remember, we are always ready to help and guide you through the selection process so don't hesitate to contact us.

PRODUCT KEY

Winlet 400 **CL** **SHB** **HV** **PSAC** *

CL - COMPACT LIFTER

This model is equipped with small steering wheels and slim traction wheels which gives it low friction and makes it easy to turn.

This is the most compact machine available and is ideal for working in narrow spaces.



TL - TERRAIN LIFTER

This machine has large and wide steering wheels as well as traction wheels. This gives it great stability and strong traction.

The ideal choice for outdoor installations.



SHB - SINGLE HYDRAULIC BOOM

Hydraulic boom with single stroke telescopic profiles. Higher lifting capacity and the most compact machine available with 1x500 mm. extension.

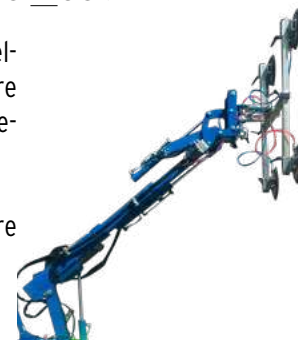
Ideal for installations that does not require long reach.



DHB - DOUBLE HYDRAULIC BOOM

Hydraulic boom with double stroke telescopic profiles. More reach and more lifting height with full hydraulic movements and 2x500 mm. extension.

Ideal for installations that require longer reach or more lifting height.



HV - HYDRAULIC VERTICAL LIFT

The well-known traditional Winlet front design, which enables you to do 100% linear fine adjustments.

This front has hydraulic vertical lift and manual side shift.



HS - HYDRAULIC SIDESHIFT

A more compact and light front design with hydraulic sideshift.

With this combination you will benefit from a more compact machine with higher lifting capacity - but with a little less reach and lifting height.



PSAC - PROPORTIONAL SINGLE AXIS CONTROL

The well-known traditional Winlet control panel.

Choose the function you want to control and adjust the speed 100% stepless with the speed-slider. Only one function can be operated at a time.



MAC - MULTI AXIS CONTROL

Use two hydraulic functions at a time.

The Multi Axis Control is very easy to use, even for operators with big gloves on their hands.

Choose between 3 preset speed levels: 10% - 50% - 100%.



*Shown example of configuration is a Winlet 400 Compact Lifter (CL) with Single Hydraulic Boom (SHB), Hydraulic Vertical lift (HV) and Proportional Single Axis Control (PSAC)

Winlet 400

CL

SHB

HV

Compact model, with compact/short reach and a front with vertical hydraulic fine adjustment and manual side shift

i MAX LIFTING CAPACITY 400 KG

i WIDTH 690 MM

i MAX LIFTING HEIGHT 3.078 MM

i HYDRAULIC FINE LIFT 200 MM

Are you looking for an extremely compact glazing robot with superior fine adjustment features? Here it is!

Winlet 400CL is built to get through narrow passageways and operate in confined space. All the while still having the capacity of lifting an impressive 400 kg.



Winlet 400CL is equipped with extra narrow steering and traction wheels and has a width of only 690 mm when the load is on the side of the machine.



SAFETY APPROVED



All the glazing robots in the Winlet 400 series live up to the **European Standard: 13000 - 2010 Cranes-Mobile Cranes.**

The European standard is applicable to the design, construction, installation of safety devices, information for use, maintenance and testing of mobile cranes.

Therefore you can be 100% sure that your Winlet 400 is safety approved - according to the highest standards.



CHOOSE BETWEEN MAC OR PSAC CONTROL



All Winlet 400 configurations are available with one of two different operating panels.

Choose which one fits your needs.

1. MAC (Multi Axis Control), which allows controlling of more hydraulic functions at a time. The operator can adjust the speed at the levels: 100 % - 50 % - 10 %.

2. PSAC (Proportional Single Axis Control), the traditional Winlet controls, where one function is operated stepless.

KEY ADVANTAGES

- Powerful front wheel drive
- Electromagnetic brakes
- Integrated safe & reliable 2 circuit vacuum system
- Ecomatic battery saving system
- Intelligent overload monitoring system
- Safety tiller switch on steering handle
- Easy maneuvering with ergonomic operating lever
- 100% linear movements at the front - up/down & sideways
- Hydraulic linear movements controlled in the front
- Integrated lifting eye for lifting the Winlet by crane
- Weather resistant design

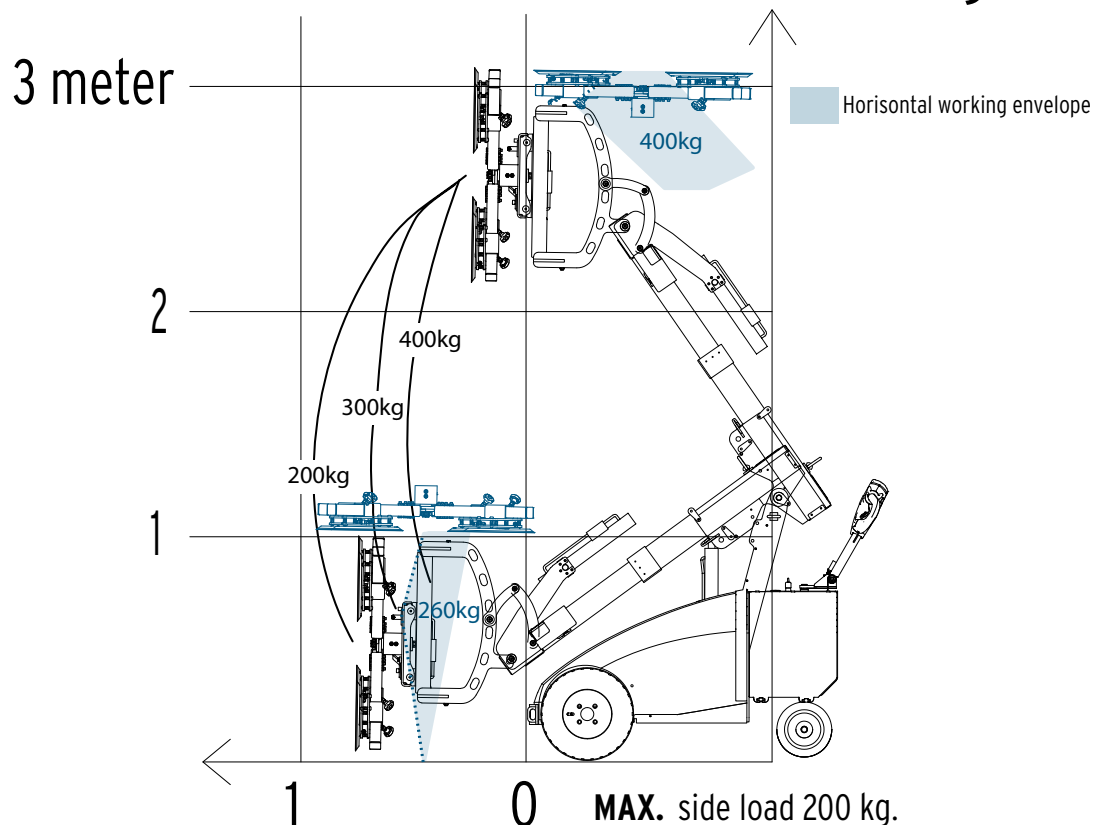
Winlet 400CL SHB/HV

TECHNICAL SPECIFICATIONS^{*1}

LIFTING CAPACITY	400 KG	HYDRAULIC FINE LIFT ON ARM 100% linear movements	200 MM
MAX LOAD ARM OUT/IN	200 KG / 400 KG	TILT FUNCTION	BACK: 45° FORTH: 97°
MAX SIDE MOUNTED LOAD	200 KG	ROTATION	ENDLESS
TOTAL LENGTH	1.775 MM	SUCTION CUPS	4 X Ø310 (Ø360/Ø410) ^{*2} MM
TOTAL WIDTH Single mounted tires	690 MM	FRONT WHEEL DRIVE 24v AC transaxle	1200W
TOTAL WIDTH Twin mounted tires	920 MM	BATTERIES	2X90 AH
LIFTING HEIGHT Vertical cups, center of lifting yoke	2.663 MM	OPERATING HOURS On fully charged batteries	12 HOURS
EXTENSION MIN/MAX Front bumper to suction cup	458 MM / 958 MM	CHARGING TIME	8-10 HOURS
LIFTING HEIGHT MIN/MAX Horizontal cups down	0 MM / 890 MM	SUITABLE FOR OUTDOOR USE Water resistant	YES
LIFTING HEIGHT MIN/MAX Horizontal cups up	2.670 MM / 3.078 MM	INTEGRATED LIFTING EYE For lifting of the Winlet	YES
MANUAL SIDE SHIFT 100% linear movements	100 MM		

^{*2}Optional

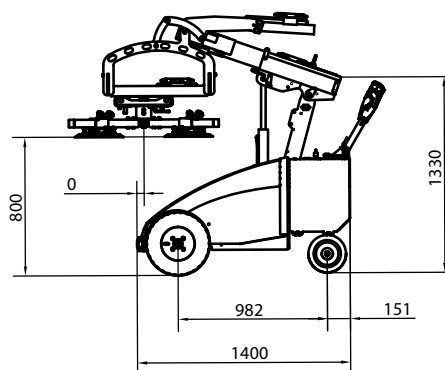
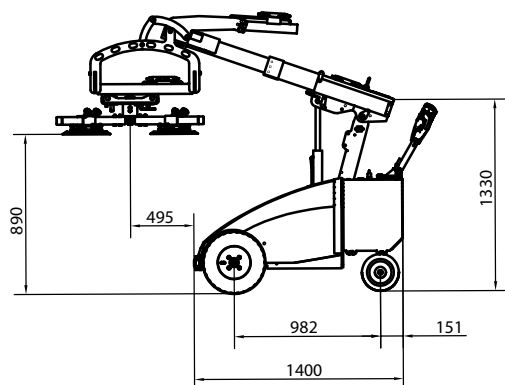
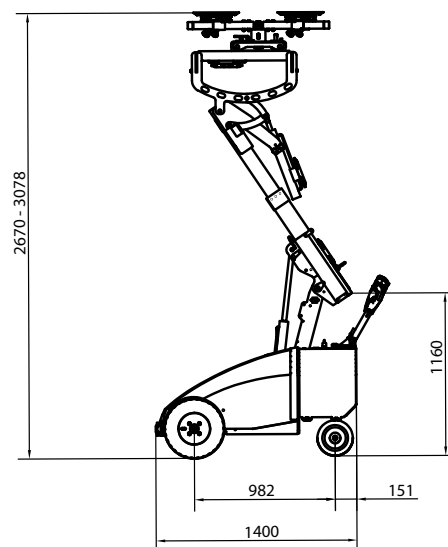
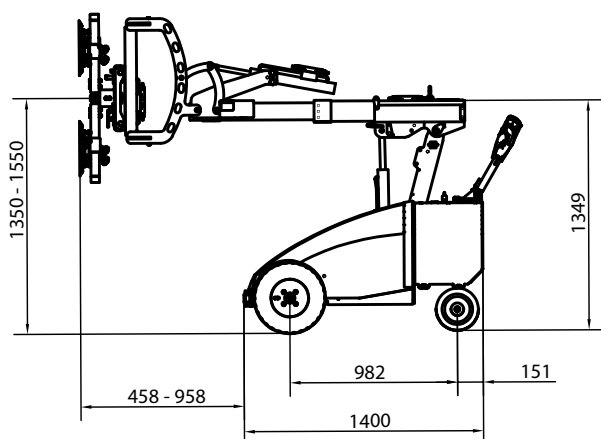
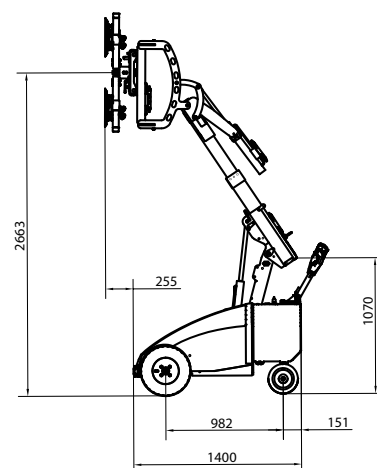
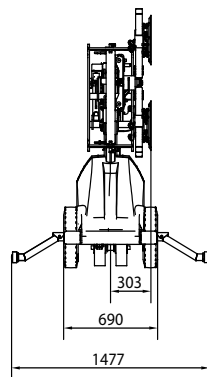
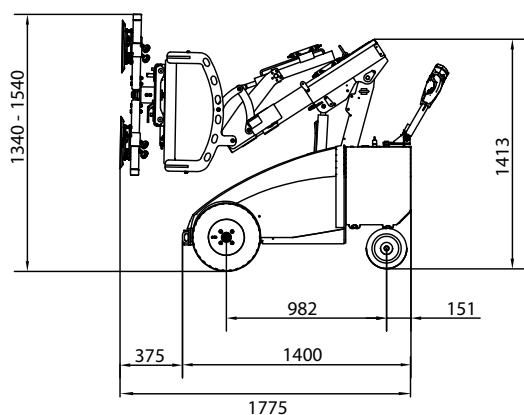
WINLET 400CL SHB/HV MAX. LOAD kg.



^{*1} The dimensions are indicative and may vary +/- 10mm. The photographs and/or drawings in this document are for illustrative purposes only.

Winlet 400CL SHB/HV

DIMENSIONS*



* The dimensions are indicative and may vary +/- 10mm. The photographs and/or drawings in this document are for illustrative purposes only.

Winlet 400

CL

DHB

HV

Compact model with extra reach and a front with vertical hydraulic fine adjustment and manual side shift.

i MAX LIFTING HEIGHT 3635 MM

i WIDTH 690 MM

i MAX LIFTING CAPACITY 315 KG

i HYDRAULIC FINE LIFT 200 MM

Are you looking for an extremely compact glazing robot with extra lifting height, reach and superior fine adjustment features? This is it!

Winlet 400CL is built to get through narrow passageways and operate in places with limited space.



Winlet 400CL is equipped with extra narrow steering and traction wheels and has a width of only 690 mm when the load is on the side of the machine.



SAFETY APPROVED



All the glazing robots in the Winlet 400 series live up to the European Standard: 13000 - 2010 Cranes-Mobile Cranes.

The European standard is applicable to the design, construction, installation of safety devices, information for use, maintenance and testing of mobile cranes.

Therefore you can be 100% sure that your Winlet 400 is safety approved - according to the highest standards.



CHOOSE BETWEEN MAC OR PSAC CONTROL



All Winlet 400 configurations are available with one of two different operating panels.

Choose which one fits your needs.

1. MAC (Multi Axis Control), which allows controlling of more hydraulic functions at a time. The operator can adjust the speed at the levels: 100 % - 50 % - 10 %.

2. PSAC (Proportional Single Axis Control), the traditional Winlet controls, where one function is operated stepless.

KEY ADVANTAGES

- Powerful front wheel drive
- Electromagnetic brakes
- Integrated safe & reliable 2 circuit vacuum system
- Ecomatic battery saving system
- Intelligent overload monitoring system
- Safety tiller switch on steering handle
- Easy maneuvering with ergonomic operating lever
- 100% linear movements at the front - up/down & sideways
- Hydraulic linear movements controlled in the front
- Integrated lifting eye for lifting the Winlet by crane
- Weather resistant design

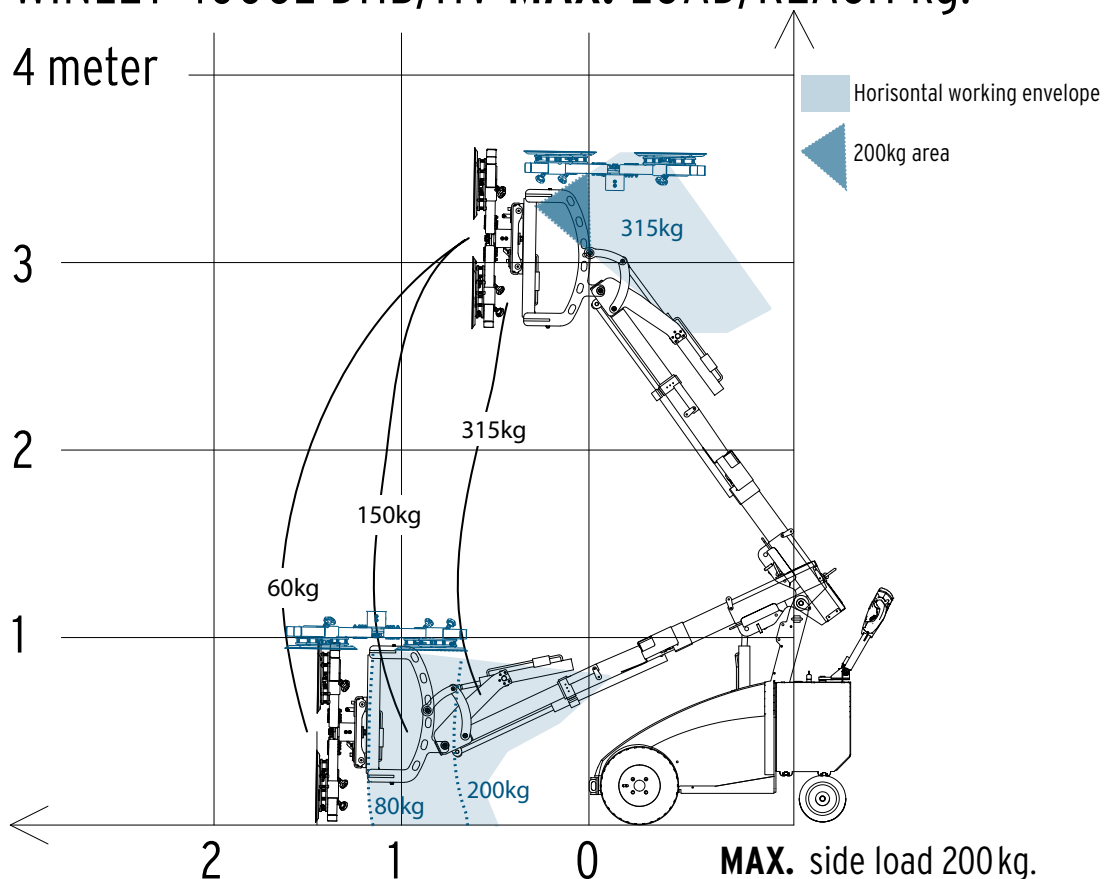
Winlet 400CL DHB/HV

TECHNICAL SPECIFICATIONS*¹

LIFTING CAPACITY	315 KG	HYDRAULIC FINE LIFT ON ARM	200 MM
MAX LOAD ARM OUT/IN	60 KG / 315 KG	100% linear movements	
MAXIMUM CAPACITY ON SIDE	200 KG	TILT FUNCTION	BACK: 45° FORTH: 97°
TOTAL LENGTH	1.885 MM	ROTATION	ENDLESS
EXTERNAL WIDTH Single mounted tires	690 MM	SUCTION CUPS	4 X Ø310 (Ø360/Ø410)* ² MM
EXTERNAL WIDTH Twin mounted tires	910 MM	FRONT WHEEL DRIVE 24v AC transaxle	1200W
LIFTING HEIGHT Vertical cups, center of lifting yoke	3.190 MM	BATTERIES	2X90 AH
EXTENSION MIN/MAX Front bumper to suction cup	590 MM / 1.590 MM	OPERATING HOURS On fully charged batteries	12 HOURS
LIFTING HEIGHT MIN/MAX Horizontal cups down	0 MM / 910 MM	CHARGING TIME	8-10 HOURS
LIFTING HEIGHT MIN/MAX Horizontal cups up	2.790 MM / 3.635 MM	SUITABLE FOR OUTDOOR USE Water resistant	YES
MANUAL SIDE SHIFT 100% linear movements	100 MM	INTEGRATED LIFTING EYE For lifting of the Winlet	YES

*²Optional

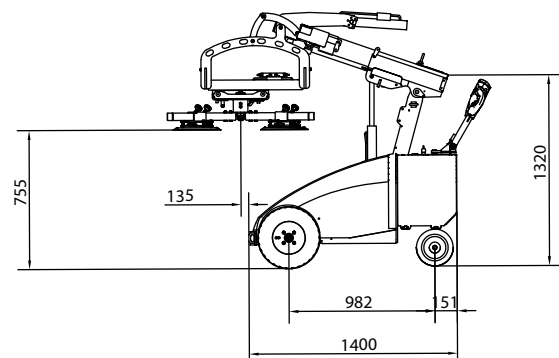
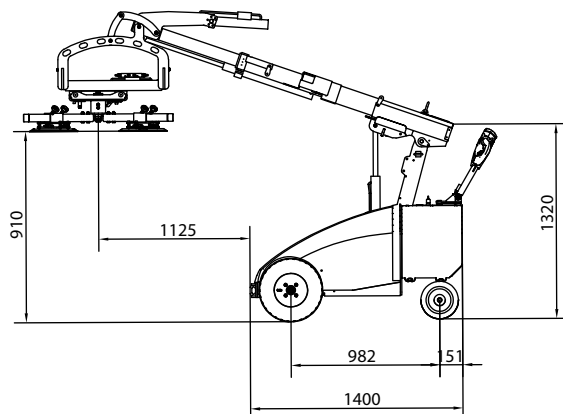
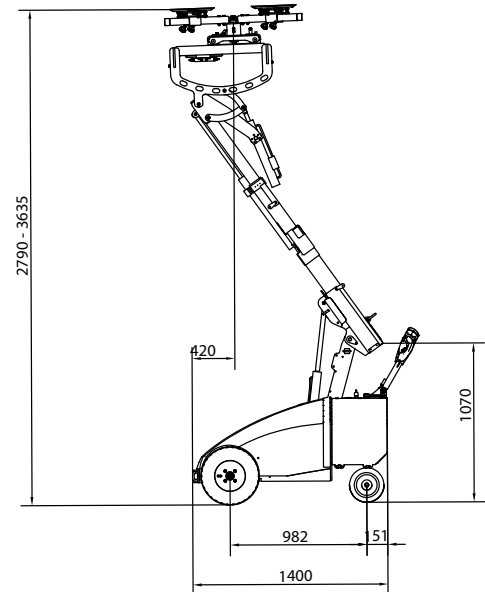
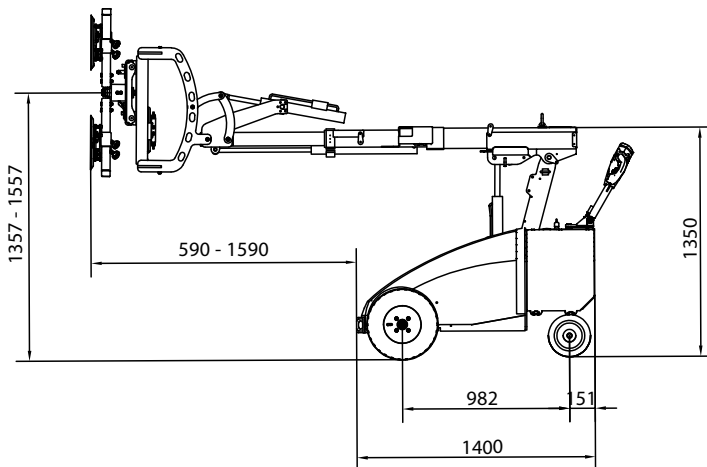
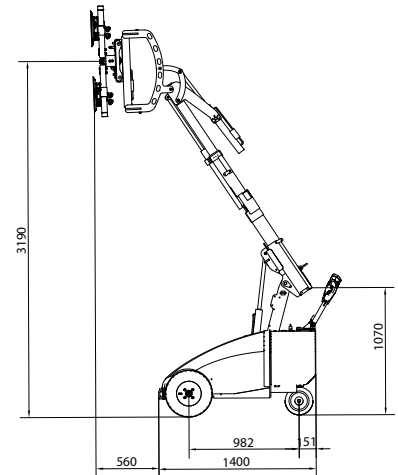
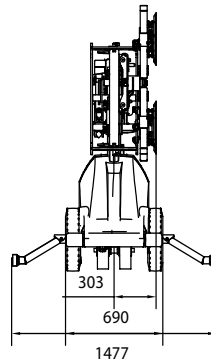
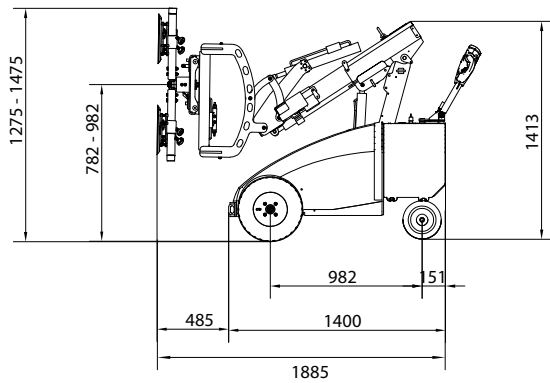
WINLET 400CL DHB/HV MAX. LOAD/REACH kg.



*¹The dimensions are indicative and may vary +/- 10mm. The photographs and/or drawings in this document are for illustrative purposes only.

Winlet 400CL DHB/HV

DIMENSIONS*



*The dimensions are indicative and may vary +/- 10mm. The photographs and/or drawings in this document are for illustrative purposes only.

Winlet 400

CL

SHB

HS

Compact model, with compact/short reach and a front with horizontal hydraulic side shift.

- MAX LIFTING CAPACITY 460 KG
- WIDTH 690 MM
- MAX LIFTING HEIGHT 2.938 MM
- HYDRAULIC SIDE SHIFT 100 MM

Are you looking for an extremely compact glazing robot with an impressive lifting capacity? This is it!

Winlet 400CL is built to get through narrow passageways and operate in places with limited space. All the while still having the capacity of lifting an impressive 460 kg.



Winlet 400CL is equipped with extra narrow steering and traction wheels and has a width of only 690mm when the load is on the side of the machine.



SAFETY APPROVED



All the glazing robots in the Winlet 400 series live up to the European Standard: 13000 - 2010 Cranes-Mobile Cranes.

The European standard is applicable to the design, construction, installation of safety devices, information for use, maintenance and testing of mobile cranes.

Therefore you can be 100% sure that your Winlet 400 is safety approved - according to the highest standards.



CHOOSE BETWEEN MAC OR PSAC CONTROL



All Winlet 400 configurations are available with one of two different operating panels.

Choose which one fits your needs.

1. MAC (Multi Axis Control), which allows controlling of more hydraulic functions at a time. The operator can adjust the speed at the levels: 100 % - 50 % - 10 %.

2. PSAC (Proportional Single Axis Control), the traditional Winlet controls, where one function is operated stepless.

KEY ADVANTAGES

- Powerful front wheel drive
- Electromagnetic brakes
- Integrated safe & reliable 2 circuit vacuum system
- Ecomatic battery saving system
- Intelligent overload monitoring system
- Safety tiller switch on steering handle
- Easy maneuvering with ergonomic operating lever
- Hydraulic linear sideways movements controlled in the front
- Integrated lifting eye for lifting the Winlet by crane
- Weather resistant design

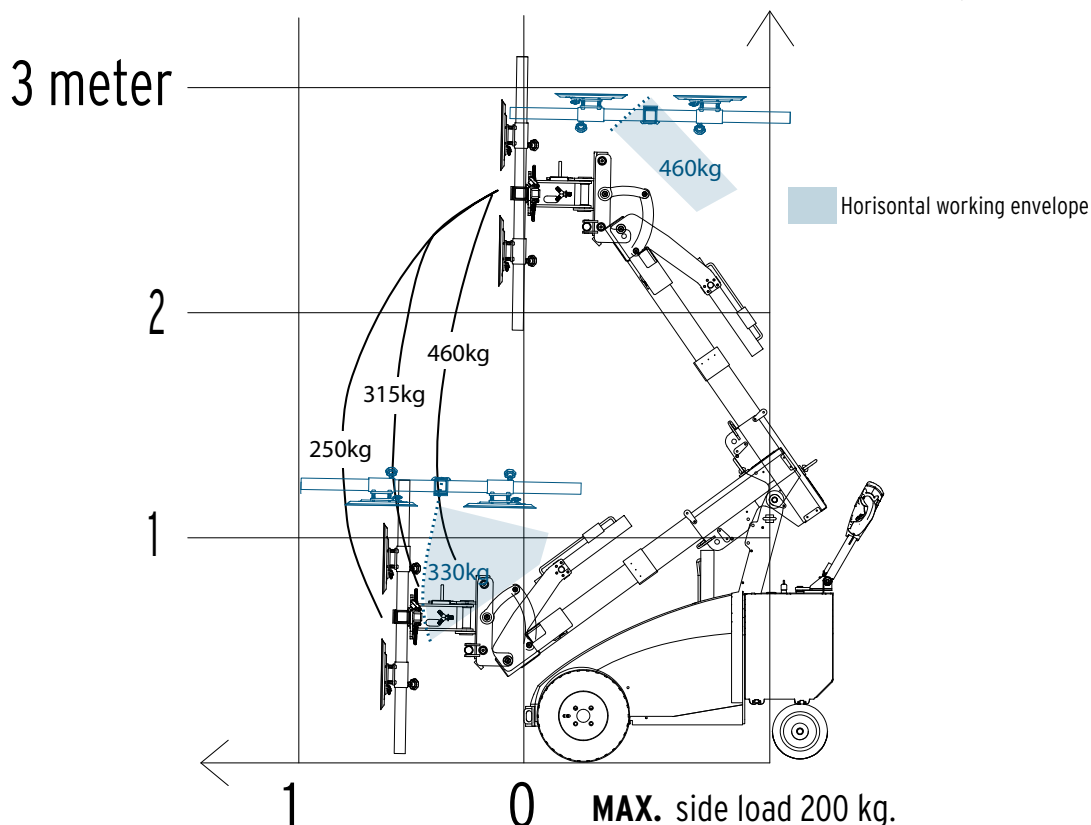
Winlet 400CL SHB/HS

TECHNICAL SPECIFICATIONS^{*1}

LIFTING CAPACITY	460 KG	HYDRAULIC SIDE SHIFT	100 MM
MAX LOAD ARM OUT/IN	250 KG / 460 KG	100% linear movements	
MAXIMUM CAPACITY ON SIDE	200 KG	TILT FUNCTION	BACK: 43° FORTH: 98°
TOTAL LENGTH	1.640 MM	ROTATION	2 X 180 DEGREES
EXTERNAL WIDTH Single mounted tires	690 MM	SUCTION CUPS	4 X Ø310 (Ø360/Ø410)* ² MM
EXTERNAL WIDTH Twin mounted tires	920 MM	FRONT WHEEL DRIVE 24v AC transaxle	1200W
LIFTING HEIGHT Vertical cups, center of lifting yoke	2.618 MM	BATTERIES	2X90 AH
EXTENSION MIN/MAX Front bumper to suction cup	318 MM / 818 MM	OPERATING HOURS On fully charged batteries	12 HOURS
LIFTING HEIGHT MIN/MAX Horizontal cups up	2.530 MM / 2.938 MM	CHARGING TIME	8-10 HOURS
		SUITABLE FOR OUTDOOR USE Water resistant	YES
		INTEGRATED LIFTING EYE For lifting of the Winlet	YES

^{*2}Optional

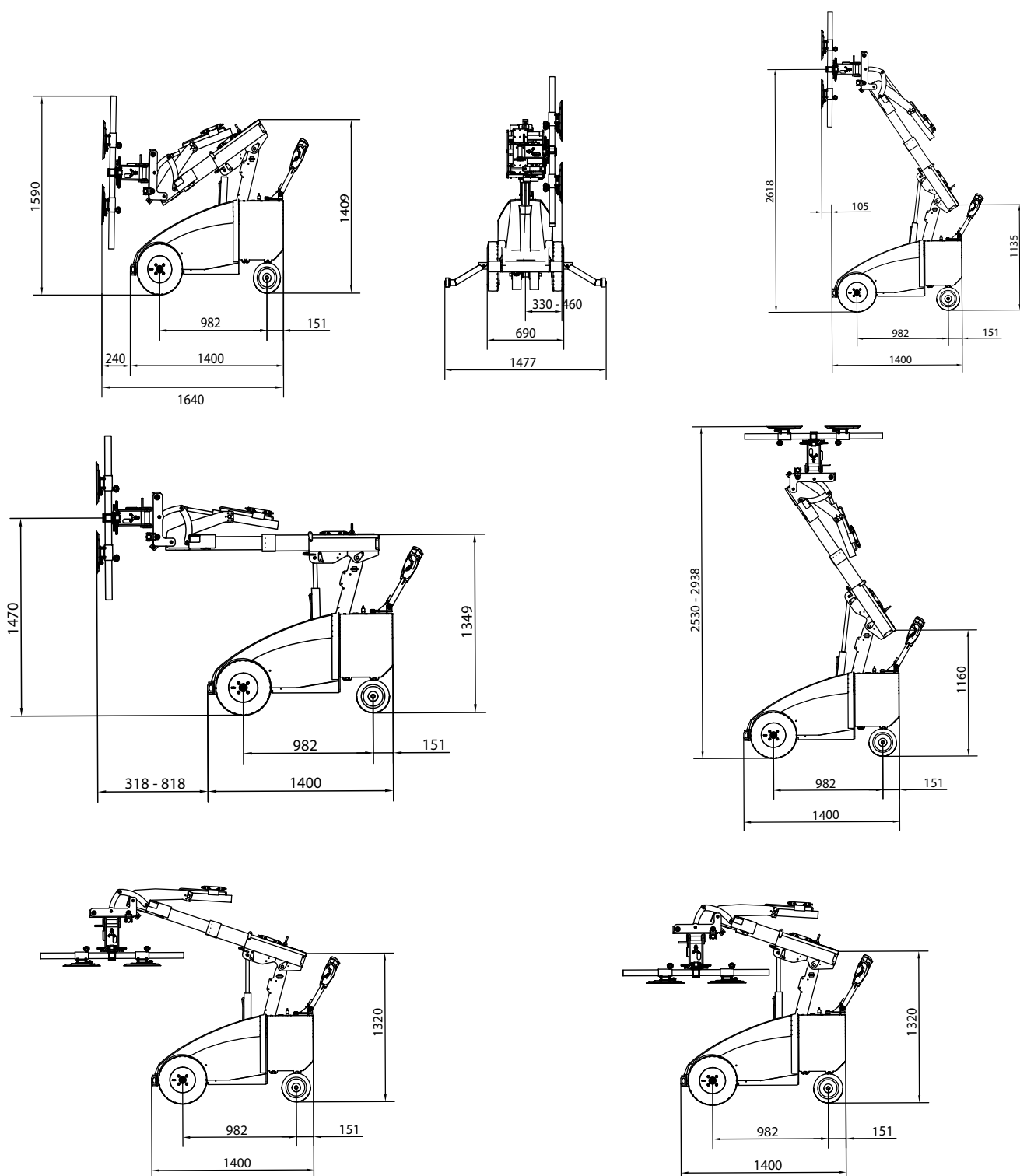
WINLET 400CL SHB/HS MAX. LOAD kg.



^{*1}The dimensions are indicative and may vary +/- 10mm. The photographs and/or drawings in this document are for illustrative purposes only.

Winlet 400CL SHB/HS

DIMENSIONS*



*The dimensions are indicative and may vary +/- 10mm. The photographs and/or drawings in this document are for illustrative purposes only.

Winlet 400

CL

DHB

HS

Compact model with extra reach and a front with horizontal hydraulic side shift.

i MAX LIFTING HEIGHT 3.465 MM

i WIDTH 690 MM

i MAX LIFTING CAPACITY 400 KG

i HYDRAULIC SIDE SHIFT 100 MM

Are you looking for an extremely compact glazing robot with extra lifting height and reach? This is it!

Winlet 400CL is built to get through narrow passageways and operate in places with limited space.



Winlet 400CL is equipped with extra narrow steering and traction wheels and has a width of only 690 mm when the load is on the side of the machine.



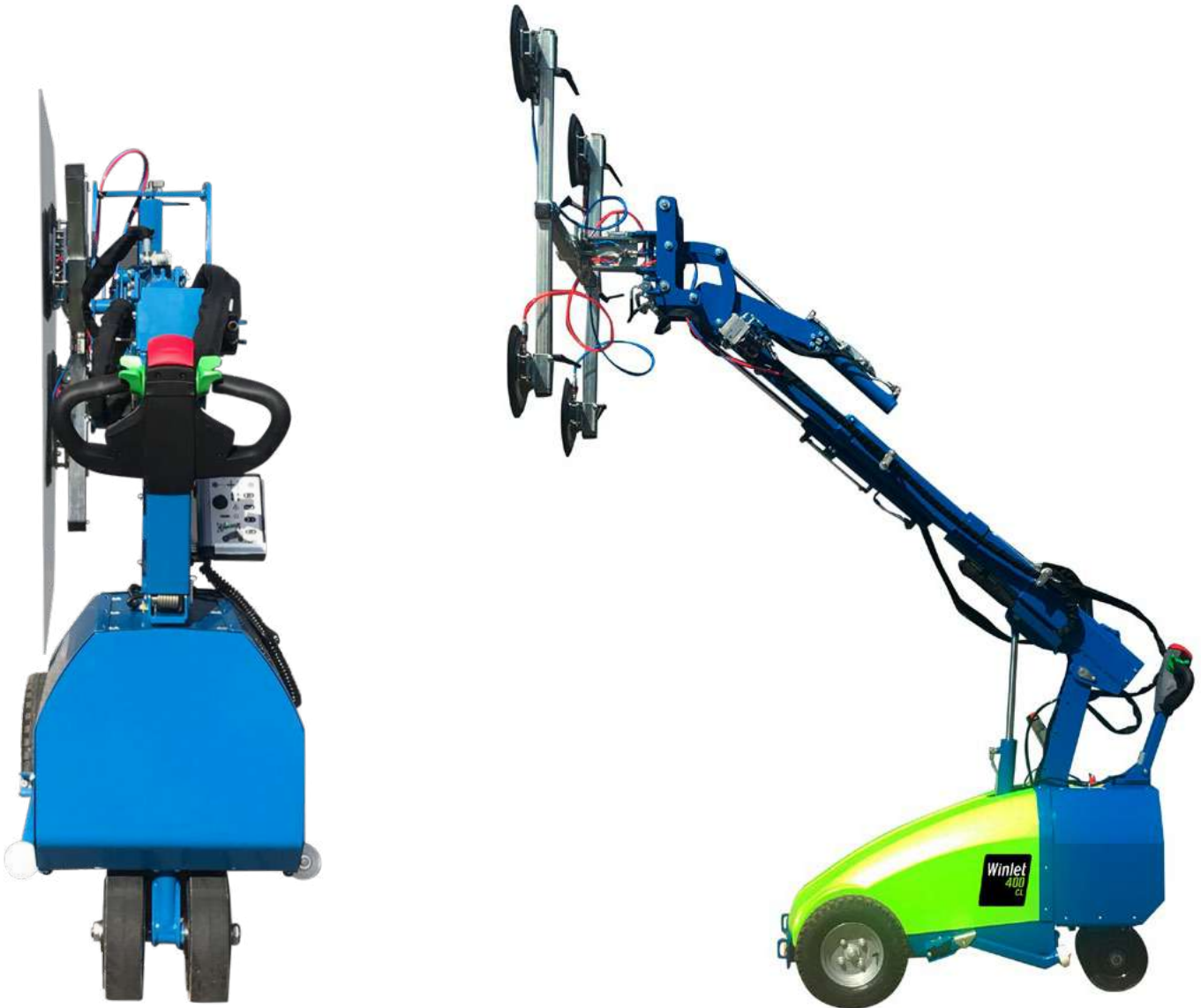
SAFETY APPROVED



All the glazing robots in the Winlet 400 series live up to the European Standard: 13000 - 2010 Cranes-Mobile Cranes.

The European standard is applicable to the design, construction, installation of safety devices, information for use, maintenance and testing of mobile cranes.

Therefore you can be 100% sure that your Winlet 400 is safety approved - according to the highest standards.



CHOOSE BETWEEN MAC OR PSAC CONTROL



All Winlet 400 configurations are available with one of two different operating panels.

Choose which one fits your needs.

1. MAC (Multi Axis Control), which allows controlling of more hydraulic functions at a time. The operator can adjust the speed at the levels: 100 % - 50 % - 10 %.

2. PSAC (Proportional Single Axis Control), the traditional Winlet controls, where one function is operated stepless.

KEY ADVANTAGES

- Powerful front wheel drive
- Electromagnetic brakes
- Integrated safe & reliable 2 circuit vacuum system
- Ecomatic battery saving system
- Intelligent overload monitoring system
- Safety tiller switch on steering handle
- Easy maneuvering with ergonomic operating lever
- Hydraulic linear sideways movements controlled in the front
- Integrated lifting eye for lifting the Winlet by crane
- Weather resistant design

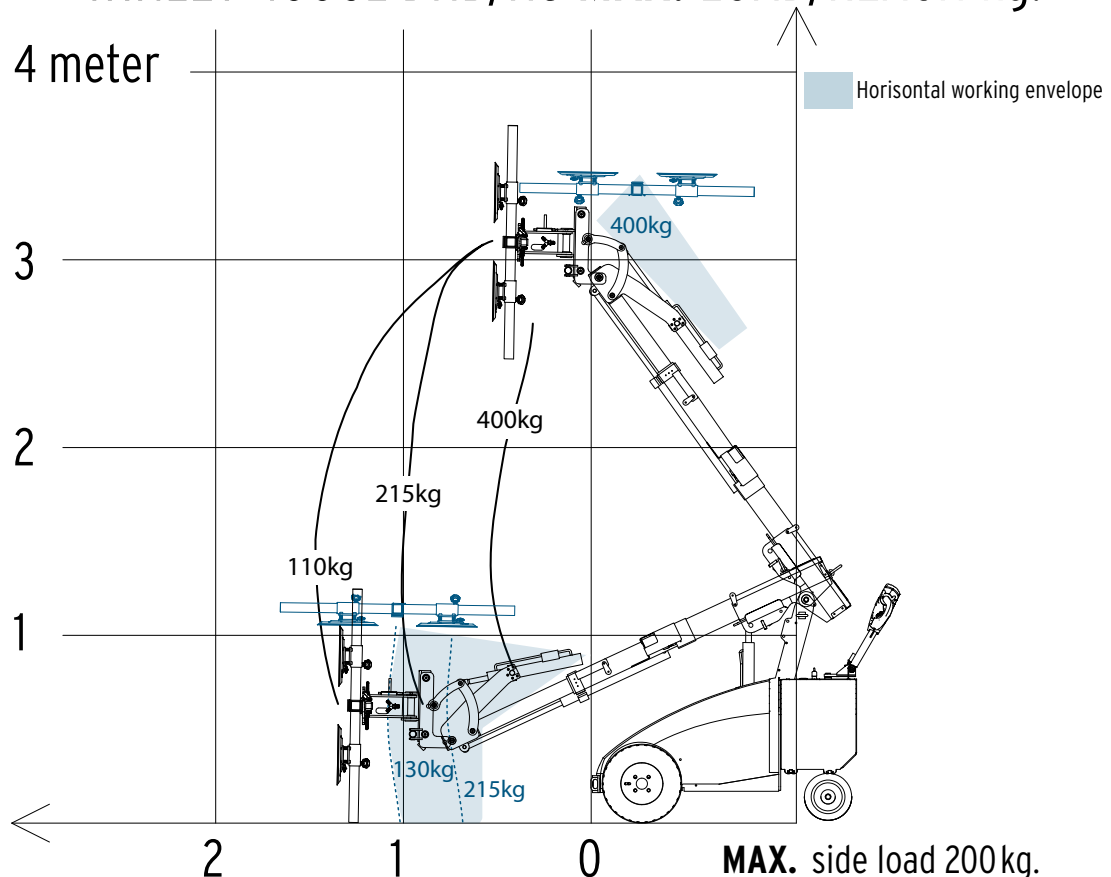
Winlet 400CL DHB/HS

TECHNICAL SPECIFICATIONS^{*1}

LIFTING CAPACITY	400 KG	HYDRAULIC SIDE SHIFT	100 MM
MAX LOAD ARM OUT/IN	110 KG / 400 KG	100% linear movements	
MAXIMUM CAPACITY ON SIDE	200 KG	TILT FUNCTION	BACK: 43° FORTH: 98°
TOTAL LENGTH	1.750 MM	ROTATION	2 X 180 DEGREES
EXTERNAL WIDTH Single mounted tires	690 MM	SUCTION CUPS	4 X Ø310 (Ø360/Ø410) ^{*2} MM
EXTERNAL WIDTH Twin mounted tires	910 MM	FRONT WHEEL DRIVE 24v AC transaxle	1200W
LIFTING HEIGHT Vertical cups, center of lifting yoke	3.100 mm	BATTERIES	2X90 AH
EXTENSION MIN/MAX Front bumper to suction cup	450 MM / 1.450 MM	OPERATING HOURS On fully charged batteries	12 HOURS
LIFTING HEIGHT MIN/MAX Horizontal cups down	0 MM / 1.065 MM	CHARGING TIME	8-10 HOURS
LIFTING HEIGHT MIN/MAX Horizontal cups up	2.650 MM / 3.465 MM	SUITABLE FOR OUTDOOR USE Water resistant	YES
		INTEGRATED LIFTING EYE For lifting of the Winlet	YES

^{*2}Optional

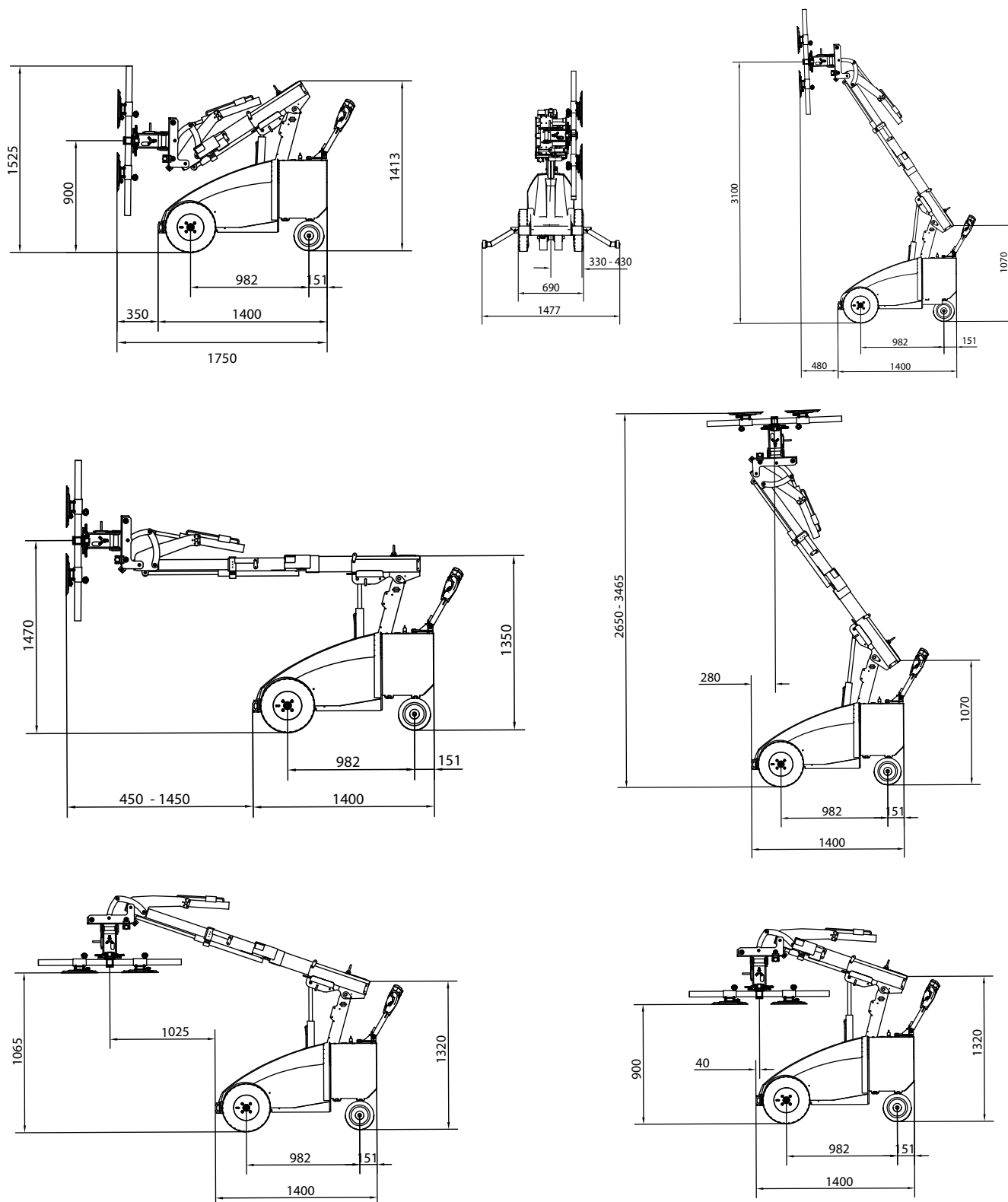
WINLET 400CL DHB/HS MAX. LOAD/REACH kg.



^{*1} The dimensions are indicative and may vary +/- 10mm. The photographs and/or drawings in this document are for illustrative purposes only.

Winlet 400CL DHB/HS

DIMENSIONS*



*The dimensions are indicative and may vary +/- 10mm. The photographs and/or drawings in this document are for illustrative purposes only.

Winlet 400

CL

DHB

HS

HR

Compact model with extra reach and a front with horizontal hydraulic side shift and rotation.

i MAX LIFTING HEIGHT 3.465 MM

i WIDTH 690 MM

i MAX LIFTING CAPACITY 400 KG

i HYDRAULIC SIDE SHIFT 100 MM

i HYDRAULIC ROTATION 180°

Are you looking for an extremely compact glazing robot with extra lifting height and reach? This is it!

Winlet 400CL is built to get through narrow passageways and operate in places with limited space.



Winlet 400CL is equipped with extra narrow steering and traction wheels and has a width of only 690 mm when the load is on the side of the machine.



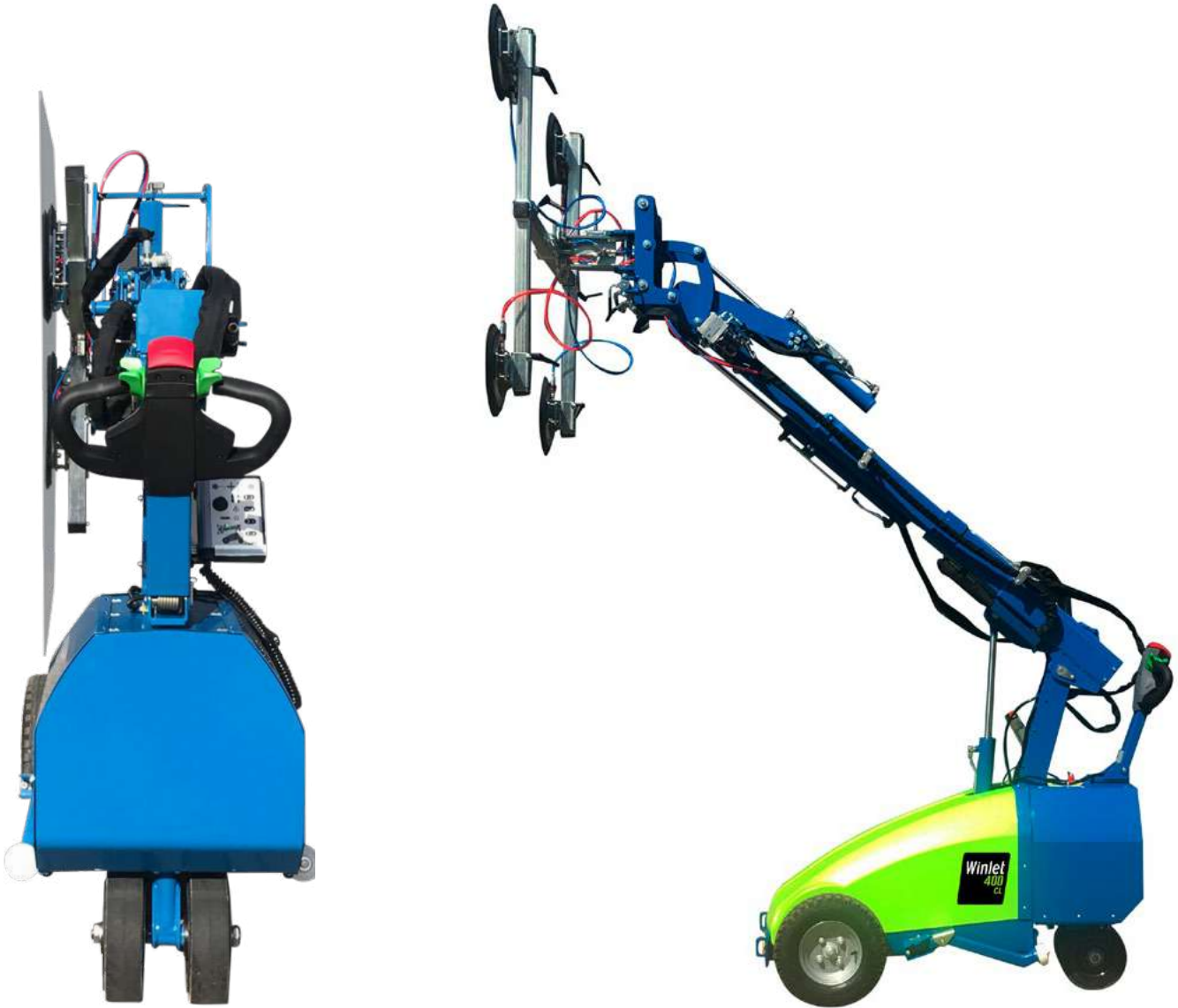
SAFETY APPROVED



All the glazing robots in the Winlet 400 series live up to the European Standard: 13000 - 2010 Cranes-Mobile Cranes.

The European standard is applicable to the design, construction, installation of safety devices, information for use, maintenance and testing of mobile cranes.

Therefore you can be 100% sure that your Winlet 400 is safety approved - according to the highest standards.



CHOOSE BETWEEN MAC OR PSAC CONTROL



All Winlet 400 configurations are available with one of two different operating panels.

Choose which one fits your needs.

1. MAC (Multi Axis Control), which allows controlling of more hydraulic functions at a time. The operator can adjust the speed at the levels: 100 % - 50 % - 10 %.

2. PSAC (Proportional Single Axis Control), the traditional Winlet controls, where one function is operated stepless.

KEY ADVANTAGES

- Powerful front wheel drive
- Electromagnetic brakes
- Integrated safe & reliable 2 circuit vacuum system
- Ecomatic battery saving system
- Intelligent overload monitoring system
- Safety tiller switch on steering handle
- Easy maneuvering with ergonomic operating lever
- Hydraulic linear sideways movements controlled in the front
- Integrated lifting eye for lifting the Winlet by crane
- Weather resistant design

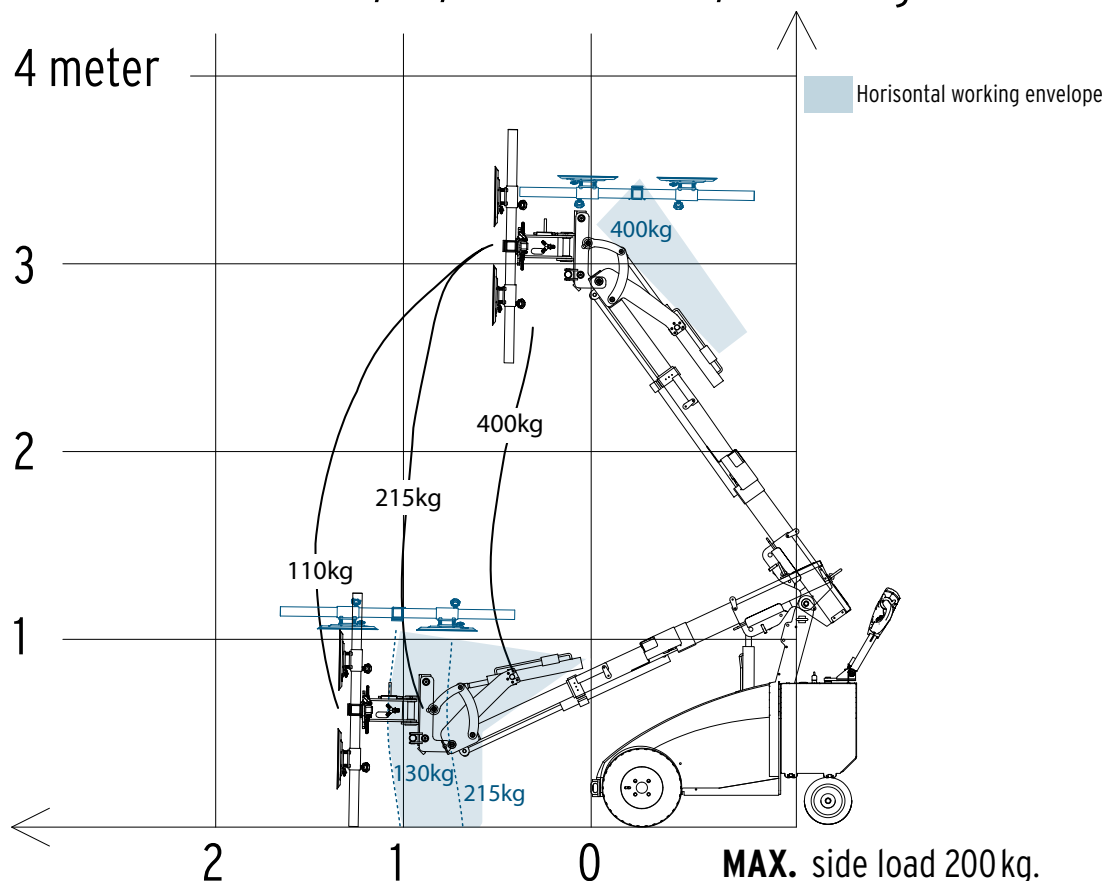
Winlet 400CL DHB/HS/HR

TECHNICAL SPECIFICATIONS^{*1}

LIFTING CAPACITY	400 KG	HYDRAULIC SIDE SHIFT	100 MM
MAX LOAD ARM OUT/IN	110 KG / 400 KG	100% linear movements	
MAXIMUM CAPACITY ON SIDE	200 KG	TILT FUNCTION	BACK: 43° FORTH: 98°
TOTAL LENGTH	1.750 MM	HYDRAULIC ROTATION	180 DEGREES
EXTERNAL WIDTH Single mounted tires	690 MM	SUCTION CUPS	4 X Ø310 (Ø360/Ø410) ^{*2} MM
EXTERNAL WIDTH Twin mounted tires	910 MM	FRONT WHEEL DRIVE 24v AC transaxle	1200W
LIFTING HEIGHT Vertical cups, center of lifting yoke	3.100 mm	BATTERIES	2X90 AH
EXTENSION MIN/MAX Front bumper to suction cup	450 MM / 1.450 MM	OPERATING HOURS On fully charged batteries	12 HOURS
LIFTING HEIGHT MIN/MAX Horizontal cups down	0 MM / 1.065 MM	CHARGING TIME	8-10 HOURS
LIFTING HEIGHT MIN/MAX Horizontal cups up	2.650 MM / 3.465 MM	SUITABLE FOR OUTDOOR USE Water resistant	YES
		INTEGRATED LIFTING EYE For lifting of the Winlet	YES

^{*2}Optional

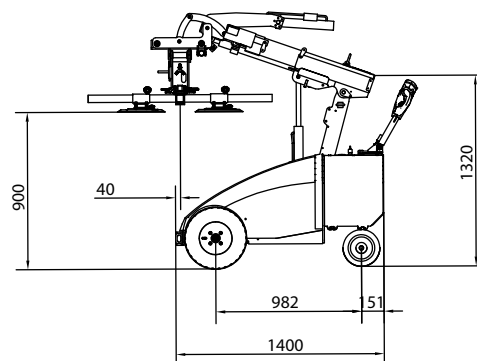
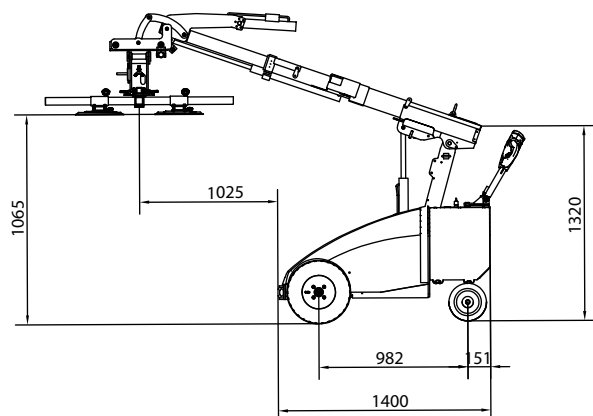
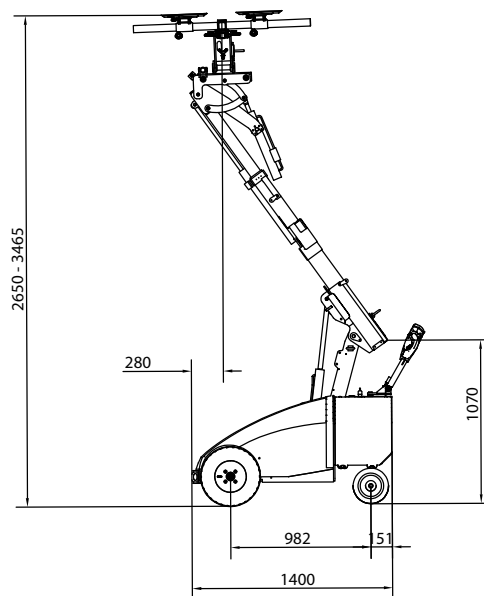
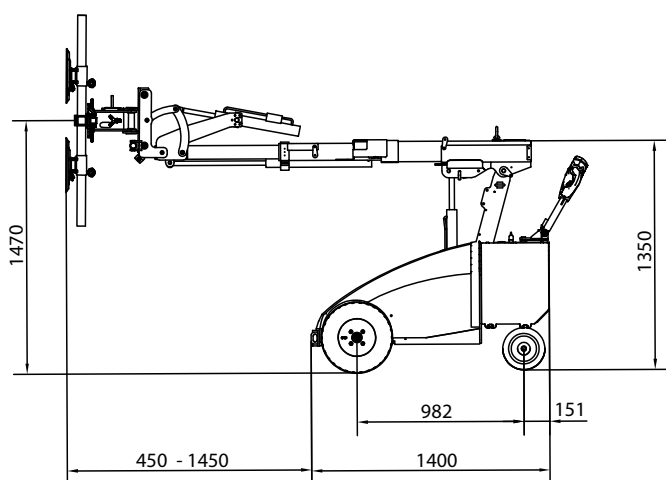
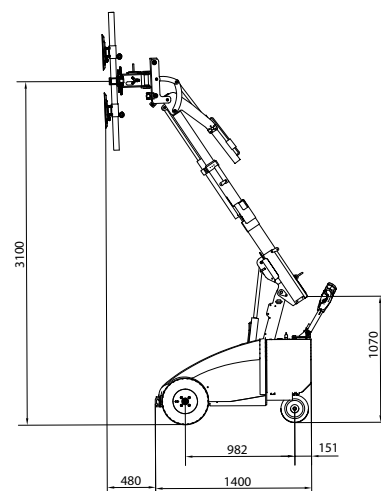
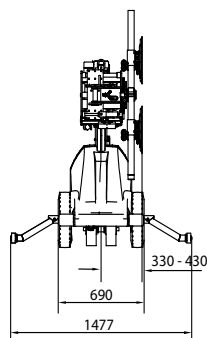
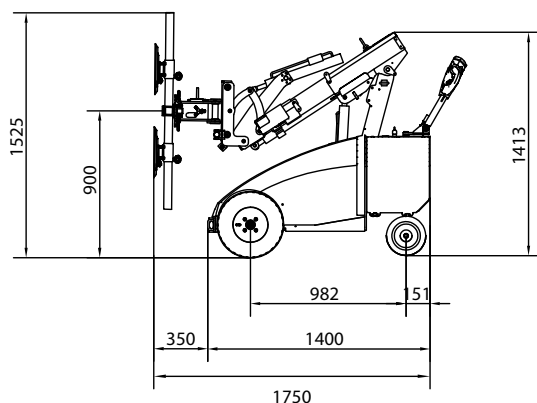
WINLET 400CL DHB/HS/HR MAX. LOAD/REACH kg.



^{*1} The dimensions are indicative and may vary +/- 10mm. The photographs and/or drawings in this document are for illustrative purposes only.

Winlet 400CL DHB/HS/HR

DIMENSIONS*



*The dimensions are indicative and may vary +/- 10mm. The photographs and/or drawings in this document are for illustrative purposes only.

Winlet 400

TL

SHB

HV

Off-road model with great stability, short reach, front with vertical hydraulic fine adjustment and manual side shift.

i MAX LIFTING CAPACITY 410 KG

i WIDTH 860 MM

i MAX LIFTING HEIGHT 3.078 MM

i HYDRAULIC FINE LIFT 200 MM

Are you looking for an off-road glazing robot with superior fine adjustment features? Here it is!

Winlet 400TL is built to operate in an outdoor terrain and is extremely stable.



Winlet 400TL is equipped with extra wide steering and traction wheels making it extremely stable and ideal for outdoor installations.



SAFETY APPROVED



All the glazing robots in the Winlet 400 series live up to the European Standard: 13000 - 2010 Cranes-Mobile Cranes.

The European standard is applicable to the design, construction, installation of safety devices, information for use, maintenance and testing of mobile cranes.

Therefore you can be 100% sure that your Winlet 400 is safety approved - according to the highest standards.



CHOOSE BETWEEN MAC OR PSAC CONTROL



All Winlet 400 configurations are available with one of two different operating panels.

Choose which one fits your needs.

1. MAC (Multi Axis Control), which allows controlling of more hydraulic functions at a time. The operator can adjust the speed at the levels: 100 % - 50 % - 10 %.

2. PSAC (Proportional Single Axis Control), the traditional Winlet controls, where one function is operated stepless.

KEY ADVANTAGES

- Powerful front wheel drive
- Electromagnetic brakes
- Integrated safe & reliable 2 circuit vacuum system
- Ecomatic battery saving system
- Intelligent overload monitoring system
- Safety tiller switch on steering handle
- Easy maneuvering with ergonomic operating lever
- 100% linear movements at the front - up/down & sideways
- Hydraulic linear movements controlled in the front
- Integrated lifting eye for lifting the Winlet by crane

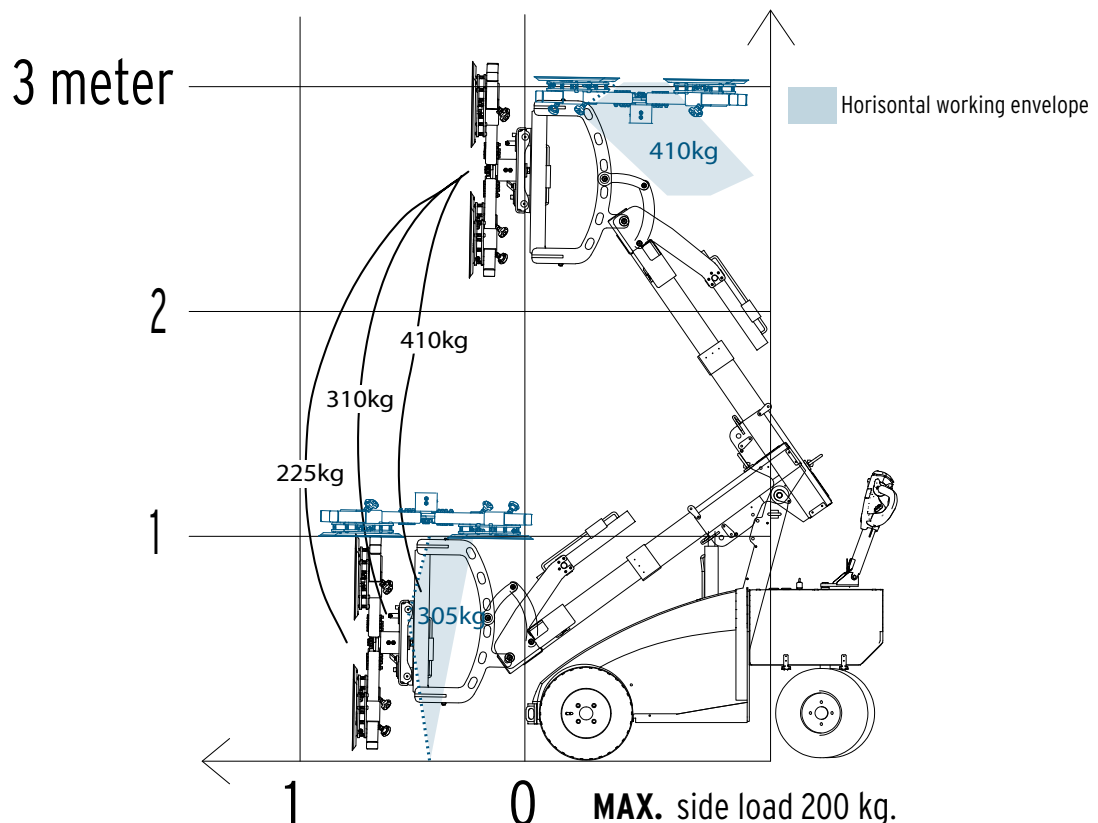
Winlet 400TL SHB/HV

TECHNICAL SPECIFICATIONS*¹

LIFTING CAPACITY	410 KG	HYDRAULIC FINE LIFT ON ARM	200 MM
MAX LOAD ARM OUT/IN	225 KG / 410 KG	100% linear movements	
MAX SIDE MOUNTED LOAD	200 KG	TILT FUNCTION	BACK: 45° FORTH: 97°
TOTAL LENGTH	1.975 MM	ROTATION	ENDLESS
TOTAL WIDTH	860 MM	SUCTION CUPS	4 X Ø310 (Ø360/Ø410)* ² MM
Single mounted tires		FRONT WHEEL DRIVE	1200W
TOTAL WIDTH	790 MM	24v AC transaxle	
CL traction wheels		BATTERIES	2X90 AH
LIFTING HEIGHT	2.663 MM	OPERATING HOURS	12 HOURS
Vertical cups, center of lifting yoke		On fully charged batteries	
EXTENSION MIN/MAX	458 MM / 958 MM	CHARGING TIME	8-10 HOURS
Front bumper to suction cup		SUITABLE FOR OUTDOOR USE	YES
LIFTING HEIGHT MIN/MAX	0 MM / 890 MM	Water resistant	
Horizontal cups down		INTEGRATED LIFTING EYE	YES
LIFTING HEIGHT MIN/MAX	2.670 MM / 3.078 MM	For lifting of the Winlet	
Horizontal cups up			
MANUAL SIDE SHIFT	100 MM		
100% linear movements			

*² Optional

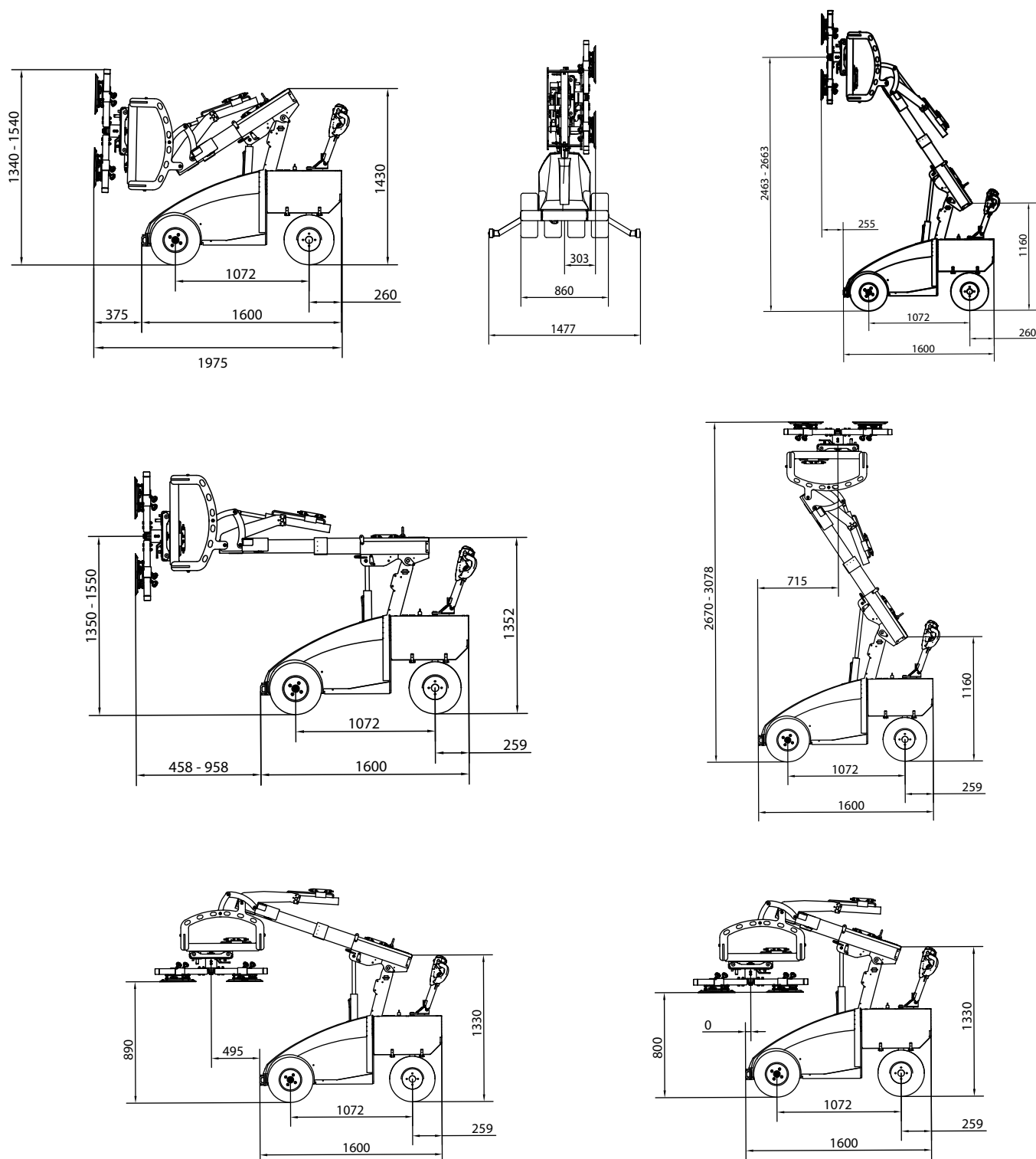
WINLET 400TL SHB/HV MAX. LOAD kg.



*¹ The dimensions are indicative and may vary +/- 10mm. The photographs and/or drawings in this document are for illustrative purposes only.

Winlet 400TL SHB/HV

DIMENSIONS*



*The dimensions are indicative and may vary +/- 10mm. The photographs and/or drawings in this document are for illustrative purposes only.

Winlet 400

TL

DHB

HV

Off-road model with great stability, extra reach, a front with vertical hydraulic fine adjustment and manual side shift.

• MAX LIFTING HEIGHT 3.635 MM

• WIDTH 860 MM

• MAX LIFTING CAPACITY 345 KG

• HYDRAULIC FINE LIFT 200 MM

Are you looking for an off-road glazing robot with extra lifting height and superior fine adjustment features? Here it is!

Winlet 400TL is built to operate in an outdoor terrain and is extremely stable.



Winlet 400TL is equipped with extra wide steering and traction wheels making it extremely stable and ideal for outdoor installations.



SAFETY APPROVED



All the glazing robots in the Winlet 400 series live up to the European Standard: 13000 - 2010 Cranes-Mobile Cranes.

The European standard is applicable to the design, construction, installation of safety devices, information for use, maintenance and testing of mobile cranes.

Therefore you can be 100% sure that your Winlet 400 is safety approved - according to the highest standards.



CHOOSE BETWEEN MAC OR PSAC CONTROL



All Winlet 400 configurations are available with one of two different operating panels.

Choose which one fits your needs.

1. MAC (Multi Axis Control), which allows controlling of more hydraulic functions at a time. The operator can adjust the speed at the levels: 100 % - 50 % - 10 %.

2. PSAC (Proportional Single Axis Control), the traditional Winlet controls, where one function is operated stepless.

KEY ADVANTAGES

- Powerful front wheel drive
- Electromagnetic brakes
- Integrated safe & reliable 2 circuit vacuum system
- Ecomatic battery saving system
- Intelligent overload monitoring system
- Safety tiller switch on steering handle
- Easy maneuvering with ergonomic operating lever
- 100% linear movements at the front - up/down & sideways
- Hydraulic linear movements controlled in the front
- Integrated lifting eye for lifting the Winlet by crane

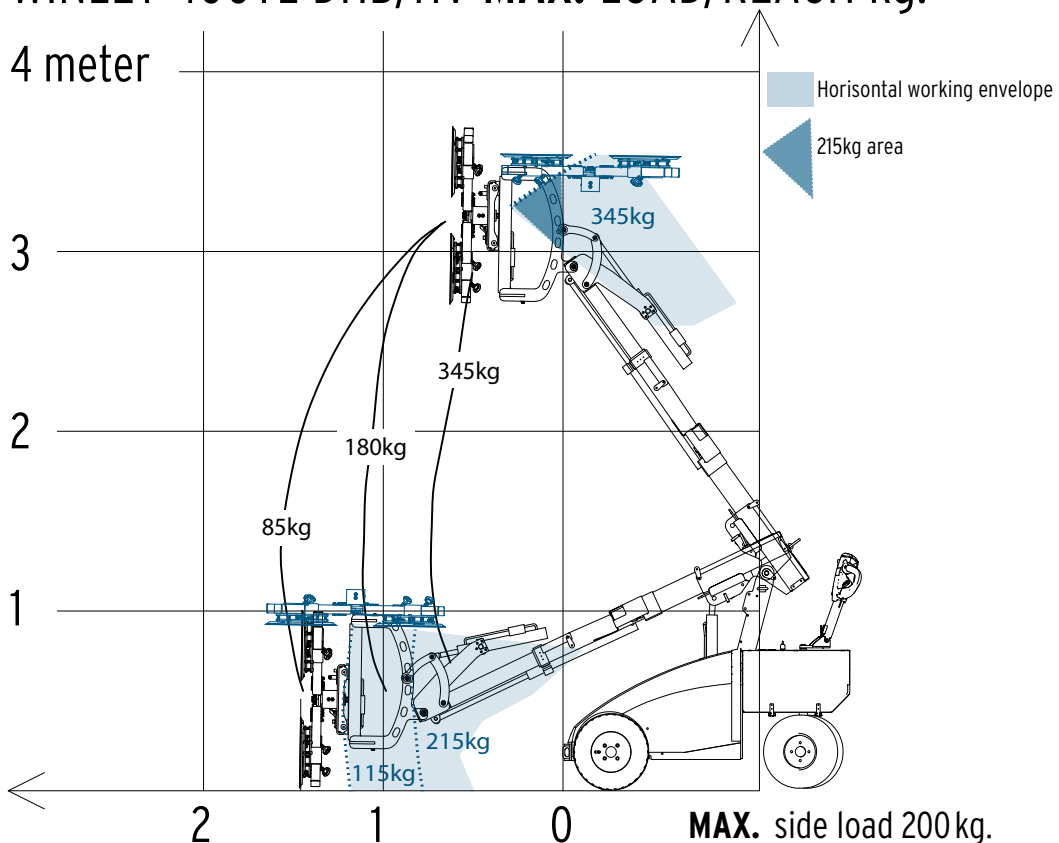
Winlet 400TL DHB/HV

TECHNICAL SPECIFICATIONS*¹

LIFTING CAPACITY	345 KG	HYDRAULIC FINE LIFT ON ARM	200 MM
MAX LOAD ARM OUT/IN	85 KG / 345 KG	100% linear movements	
MAX SIDE MOUNTED LOAD	200 KG	TILT FUNCTION	BACK: 45° FORTH: 97°
TOTAL LENGTH	2.085 MM	ROTATION	ENDLESS
TOTAL WIDTH	860 MM	SUCTION CUPS	4 X Ø310 (Ø360/Ø410)* ² MM
Single mounted tires		FRONT WHEEL DRIVE	1200W
TOTAL WIDTH	790 MM	24v AC transaxle	
CL traction wheels		BATTERIES	2X90 AH
TOTAL WEIGHT	942 KG	OPERATING HOURS	12 HOURS
LIFTING HEIGHT	3.190 MM	On fully charged batteries	
Vertical cups, center of lifting yoke		CHARGING TIME	8-10 HOURS
EXTENSION MIN/MAX	590 MM / 1.590 MM	SUITABLE FOR OUTDOOR USE	YES
Front bumper to suction cup		Water resistant	
LIFTING HEIGHT MIN/MAX	0 MM / 910 MM	INTEGRATED LIFTING EYE	YES
Horizontal cups down		For lifting of the Winlet	
LIFTING HEIGHT MIN/MAX	2.790 MM / 3.635 MM		
Horizontal cups up			
MANUAL SIDE SHIFT	100 MM		
100% linear movements			

*² Optional

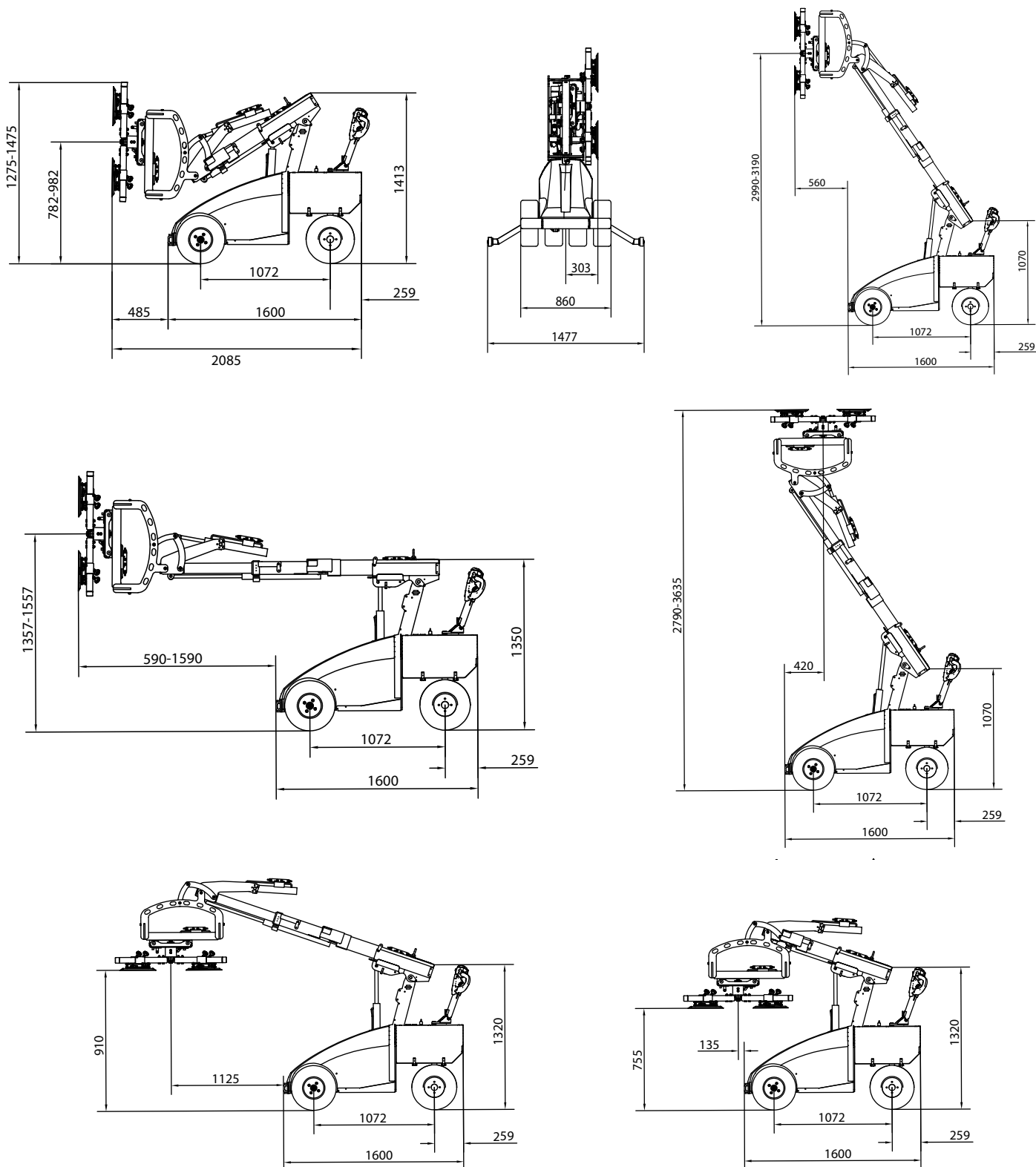
WINLET 400TL DHB/HV MAX. LOAD/REACH kg.



*¹ The dimensions are indicative and may vary +/- 10mm. The photographs and/or drawings in this document are for illustrative purposes only.

Winlet 400TL DHB/HV

DIMENSIONS*



*The dimensions are indicative and may vary +/- 10mm. The photographs and/or drawings in this document are for illustrative purposes only.

Winlet 400

TL

SHB

HS

Off-road model with great stability, short reach and a front with horizontal hydraulic side shift.

i MAX LIFTING CAPACITY 500 KG

i WIDTH 860 MM

i MAX LIFTING HEIGHT 2.938 MM

i HYDRAULIC SIDESHIFT 100 MM

Are you looking for an off-road glazing robot with an impressive lifting capacity? This is it!

Winlet 400TL is built to operate in an outdoor terrain and is extremely stable.



Winlet 400TL is equipped with extra wide steering and traction wheels making it extremely stable and ideal for outdoor installations.



SAFETY APPROVED



All the glazing robots in the Winlet 400 series live up to the European Standard: 13000 - 2010 Cranes-Mobile Cranes.

The European standard is applicable to the design, construction, installation of safety devices, information for use, maintenance and testing of mobile cranes.

Therefore you can be 100% sure that your Winlet 400 is safety approved - according to the highest standards.



CHOOSE BETWEEN MAC OR PSAC CONTROL

KEY ADVANTAGES



All Winlet 400 configurations are available with one of two different operating panels.

Choose which one fits your needs.

- Powerful front wheel drive
- Electromagnetic brakes
- Integrated safe & reliable 2 circuit vacuum system
- Ecomatic battery saving system
- Intelligent overload monitoring system
- Safety tiller switch on steering handle
- Easy maneuvering with ergonomic operating lever
- Hydraulic linear sideways movements controlled in the front
- Integrated lifting eye for lifting the Winlet by crane
- Weather resistant design

1. MAC (Multi Axis Control), which allows controlling of more hydraulic functions at a time. The operator can adjust the speed at the levels: 100 % - 50 % - 10 %.

2. PSAC (Proportional Single Axis Control), the traditional Winlet controls, where one function is operated stepless.

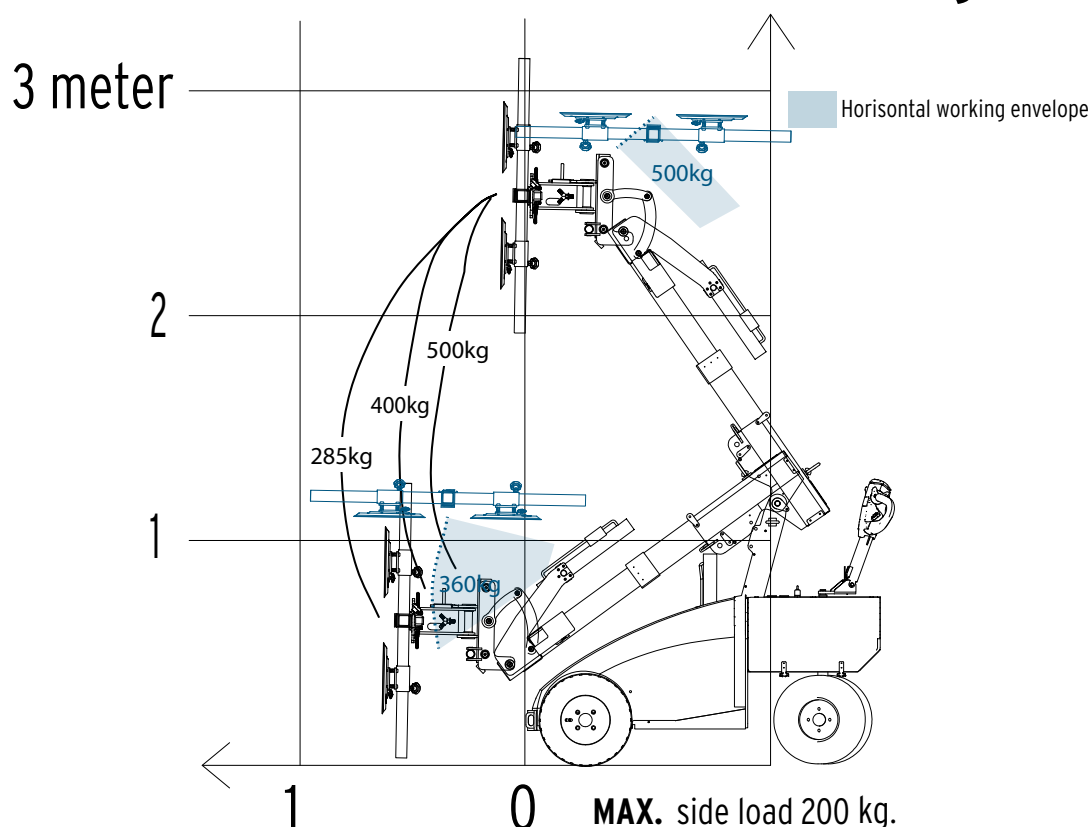
Winlet 400TL SHB/HS

TECHNICAL SPECIFICATIONS*¹

LIFTING CAPACITY	500 KG	HYDRAULIC SIDE SHIFT	100 MM
MAX LOAD ARM OUT/IN	285 KG / 500 KG	100% linear movements	
MAX SIDE MOUNTED LOAD	200 KG	TILT FUNCTION	BACK: 43° FORTH: 98°
TOTAL WEIGHT	907 KG	ROTATION	2 X 180 DEGREES
TOTAL LENGTH	1.840 MM	SUCTION CUPS	4 X Ø310 (Ø360 / Ø410)* ² MM
TOTAL WIDTH Single mounted tires	860 MM	FRONT WHEEL DRIVE 24v AC transaxle	1200W
TOTAL WIDTH CL traction wheels	790 mm	BATTERIES	2X90 AH
LIFTING HEIGHT Vertical cups, center of lifting yoke	2.573 MM	OPERATING HOURS On fully charged batteries	12 HOURS
EXTENSION MIN/MAX Front bumper to suction cup	318 MM / 818 MM	CHARGING TIME	8-10 HOURS
LIFTING HEIGHT MIN/MAX Horizontal cups down	0 MM / 1.192 MM	SUITABLE FOR OUTDOOR USE Water resistant	YES
LIFTING HEIGHT MIN/MAX Horizontal cups up	2.530 MM / 2.938 MM	INTEGRATED LIFTING EYE For lifting of the Winlet	YES

2

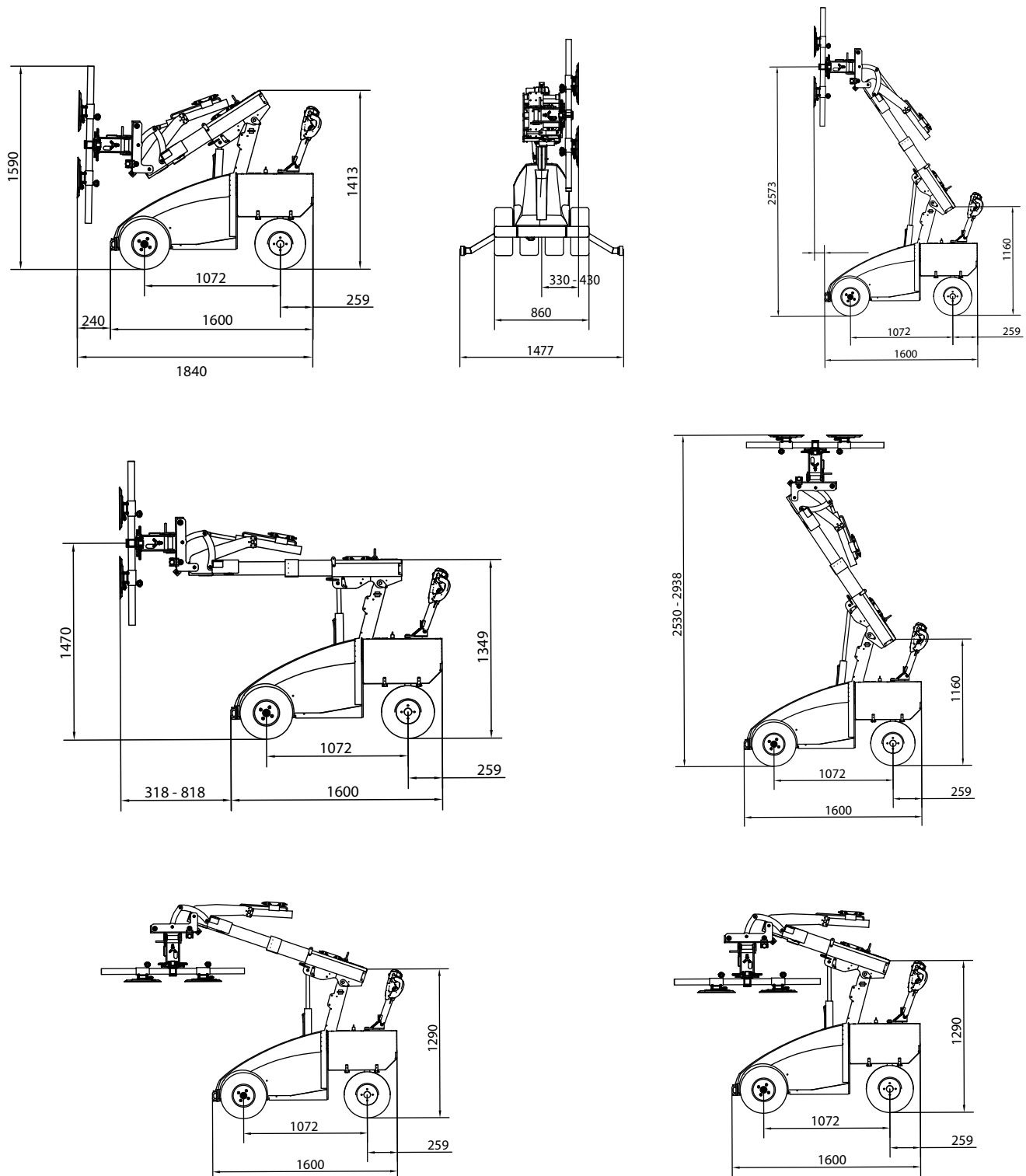
WINLET 400TL SHB/HS MAX. LOAD kg.



*¹ The dimensions are indicative and may vary +/- 10mm. The photographs and/or drawings in this document are for illustrative purposes only.

Winlet 400TL SHB/HS

DIMENSIONS*



*The dimensions are indicative and may vary +/- 10mm. The photographs and/or drawings in this document are for illustrative purposes only.

Winlet 400

TL

DHB

HS

Off-road model with great stability, extra reach and a front with horizontal hydraulic side shift.

ⓘ MAX LIFTING HEIGHT 3.465 MM

ⓘ WIDTH 860 MM

ⓘ MAX LIFTING CAPACITY 415 KG

ⓘ HYDRAULIC SIDESHIFT 100 MM

Are you looking for an off-road glazing robot with extra lifting height and an impressive lifting capacity? This is it!

Winlet 400TL is built to operate in an outdoor terrain and is extremely stable.



Winlet 400TL is equipped with extra wide steering and traction wheels making it extremely stable and ideal for outdoor installations.



SAFETY APPROVED



All the glazing robots in the Winlet 400 series live up to the European Standard: 13000 - 2010 Cranes-Mobile Cranes.

The European standard is applicable to the design, construction, installation of safety devices, information for use, maintenance and testing of mobile cranes.

Therefore you can be 100% sure that your Winlet 400 is safety approved - according to the highest standards.



CHOOSE BETWEEN MAC OR PSAC CONTROL



All Winlet 400 configurations are available with one of two different operating panels.

Choose which one fits your needs.

1. MAC (Multi Axis Control), which allows controlling of more hydraulic functions at a time. The operator can adjust the speed at the levels: 100 % - 50 % - 10 %.

2. PSAC (Proportional Single Axis Control), the traditional Winlet controls, where one function is operated stepless.

KEY ADVANTAGES

- Powerful front wheel drive
- Electromagnetic brakes
- Integrated safe & reliable 2 circuit vacuum system
- Ecomatic battery saving system
- Intelligent overload monitoring system
- Safety tiller switch on steering handle
- Easy maneuvering with ergonomic operating lever
- Hydraulic linear sideways movements controlled in the front
- Integrated lifting eye for lifting the Winlet by crane
- Weather resistant design

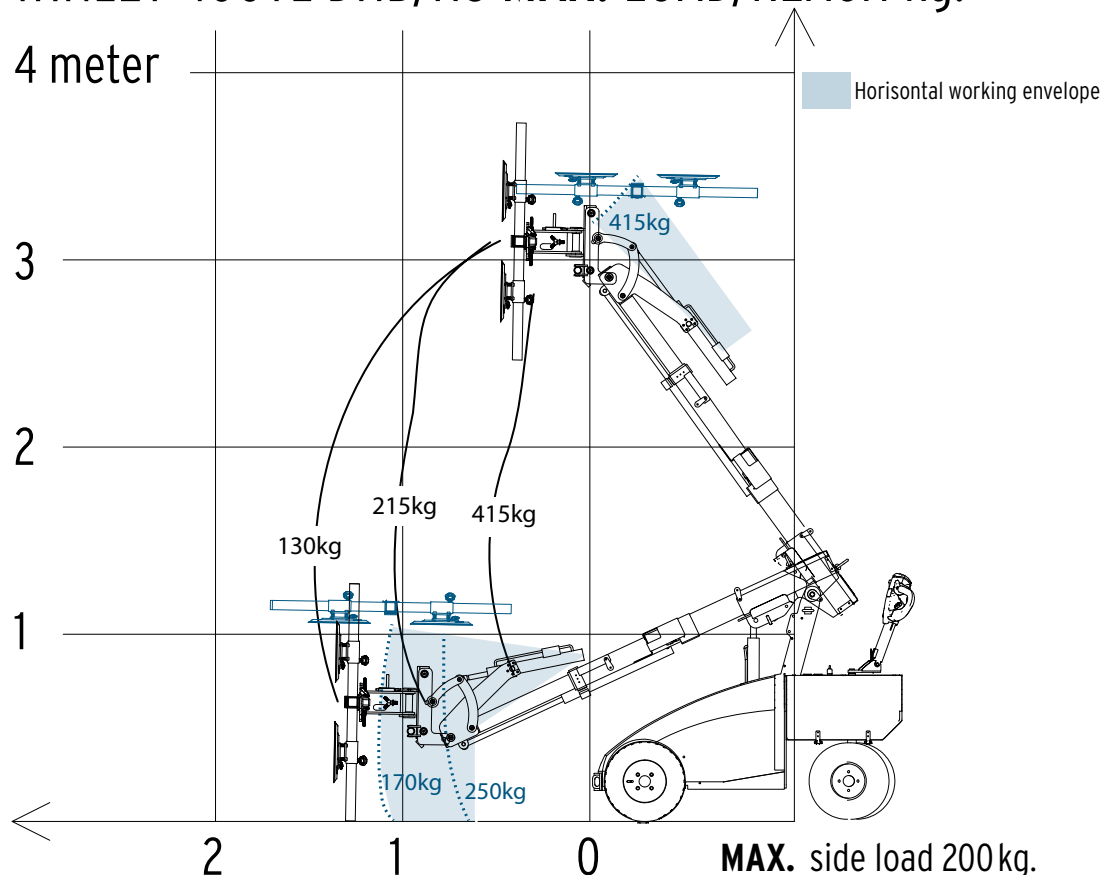
Winlet 400TL DHB/HS

TECHNICAL SPECIFICATIONS*¹

LIFTING CAPACITY	415 KG	HYDRAULIC SIDE SHIFT	100 MM
MAX LOAD ARM OUT/IN	130 KG / 415 KG	100% linear movements	
MAX SIDE MOUNTED LOAD	200 KG	TILT FUNCTION	BACK: 43° FORTH: 98°
TOTAL LENGTH	1.950 MM	ROTATION	2 X 180 DEGREES
TOTAL WIDTH Single mounted tires	860 MM	SUCTION CUPS	4 X Ø310 (Ø360 / Ø410)* ² MM
TOTAL WIDTH CL traction wheels	790 MM	FRONT WHEEL DRIVE	1200W
TOTAL WEIGHT	932 KG	24v AC transaxle	
LIFTING HEIGHT Vertical cups, center of lifting yoke	3.100	BATTERIES	2X90 AH
EXTENSION MIN/MAX Front bumper to suction cup	450 MM / 1.450 MM	OPERATING HOURS On fully charged batteries	12 HOURS
LIFTING HEIGHT MIN/MAX Horizontal cups down	0 MM / 1.065 MM	CHARGING TIME	8-10 HOURS
LIFTING HEIGHT MIN/MAX Horizontal cups up	2.650 MM / 3.465 MM	SUITABLE FOR OUTDOOR USE Water resistant	YES
		INTEGRATED LIFTING EYE For lifting of the Winlet	YES

*² Optional

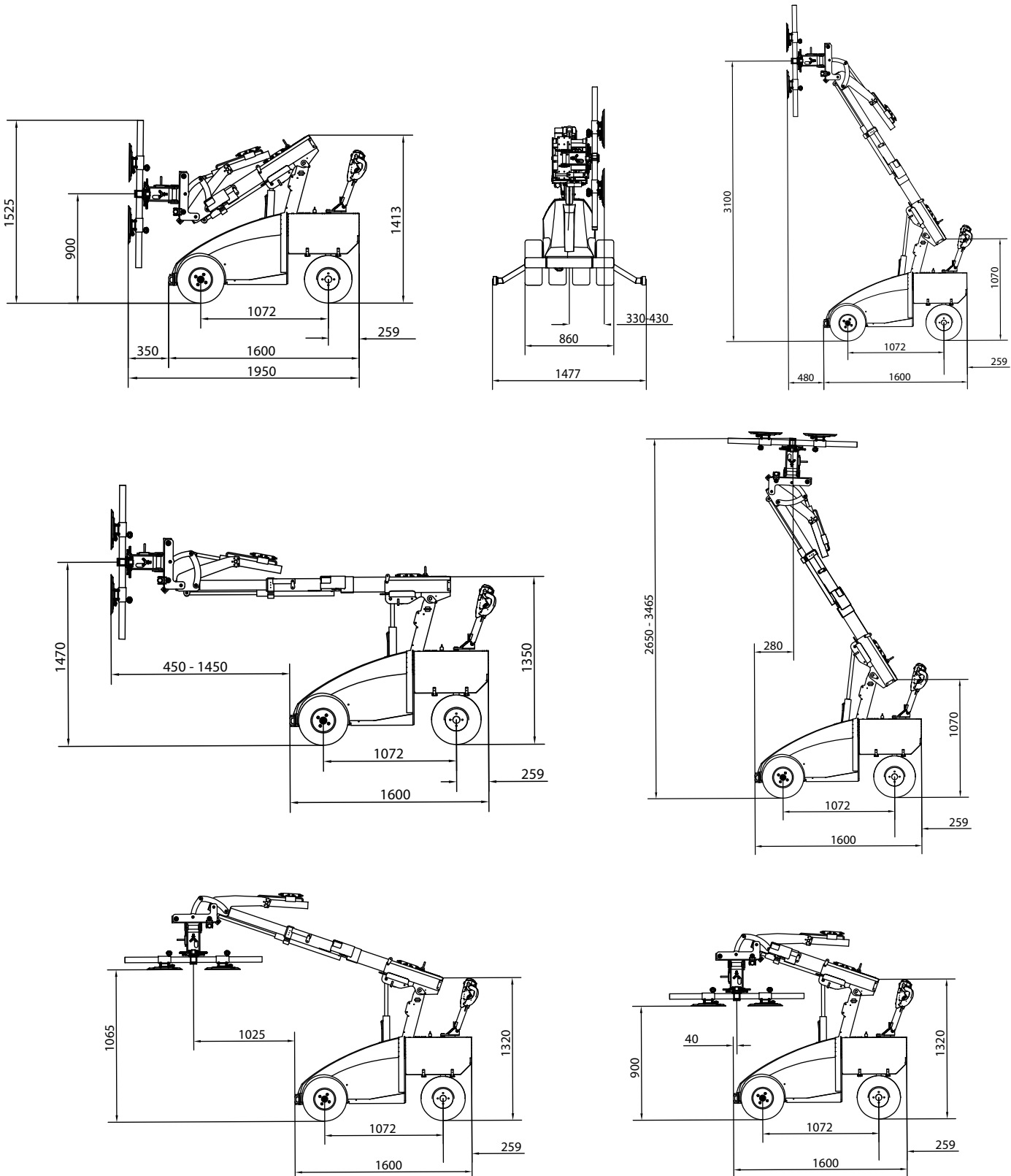
WINLET 400TL DHB/HS MAX. LOAD/REACH kg.



*¹ The dimensions are indicative and may vary +/- 10mm

Winlet 400TL DHB/HS

DIMENSIONS*



*The dimensions are indicative and may vary +/- 10mm

Winlet 400

TL

DHB

HS

HR

Off-road model with great stability, extra reach and a front with horizontal hydraulic side shift and hydraulic rotation.

ⓘ MAX LIFTING HEIGHT 3.465 MM

ⓘ WIDTH 860 MM

ⓘ MAX LIFTING CAPACITY 415 KG

ⓘ HYDRAULIC SIDESHIFT 100 MM

ⓘ HYDRAULIC ROTATION 180°

Are you looking for an off-road glazing robot with extra lifting height and an impressive lifting capacity? This is it!

Winlet 400TL is built to operate in an outdoor terrain and is extremely stable.



Winlet 400TL is equipped with extra wide steering and traction wheels making it extremely stable and ideal for outdoor installations.



SAFETY APPROVED



All the glazing robots in the Winlet 400 series live up to the European Standard: 13000 - 2010 Cranes-Mobile Cranes.

The European standard is applicable to the design, construction, installation of safety devices, information for use, maintenance and testing of mobile cranes.

Therefore you can be 100% sure that your Winlet 400 is safety approved - according to the highest standards.



CHOOSE BETWEEN MAC OR PSAC CONTROL



All Winlet 400 configurations are available with one of two different operating panels.

Choose which one fits your needs.

1. MAC (Multi Axis Control), which allows controlling of more hydraulic functions at a time. The operator can adjust the speed at the levels: 100 % - 50 % - 10 %.

2. PSAC (Proportional Single Axis Control), the traditional Winlet controls, where one function is operated stepless.

KEY ADVANTAGES

- Powerful front wheel drive
- Electromagnetic brakes
- Integrated safe & reliable 2 circuit vacuum system
- Ecomatic battery saving system
- Intelligent overload monitoring system
- Safety tiller switch on steering handle
- Easy maneuvering with ergonomic operating lever
- Hydraulic linear sideways movements controlled in the front
- Integrated lifting eye for lifting the Winlet by crane
- Weather resistant design

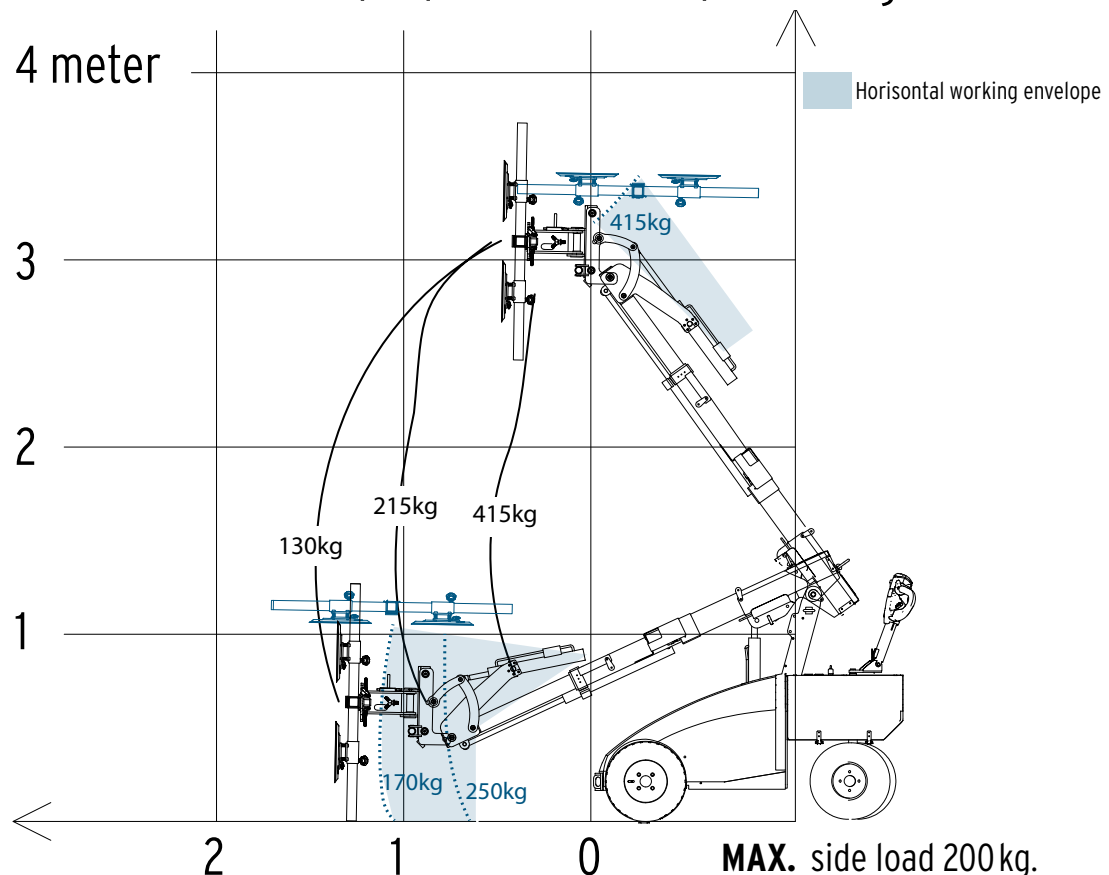
Winlet 400TL DHB/HS/HR

TECHNICAL SPECIFICATIONS*¹

LIFTING CAPACITY	415 KG	HYDRAULIC SIDE SHIFT	100 MM
MAX LOAD ARM OUT/IN	130 KG / 415 KG	100% linear movements	
MAX SIDE MOUNTED LOAD	200 KG	TILT FUNCTION	BACK: 43° FORTH: 98°
TOTAL LENGTH	1.950 MM	HYDRAULIC ROTATION	180 DEGREES
TOTAL WIDTH Single mounted tires	860 MM	SUCTION CUPS	4 X Ø310 (Ø360 / Ø410)* ² MM
TOTAL WIDTH CL traction wheels	790 MM	FRONT WHEEL DRIVE	1200W
TOTAL WEIGHT	932 KG	24v AC transaxle	
LIFTING HEIGHT Vertical cups, center of lifting yoke	3.100 MM	BATTERIES	2X90 AH
EXTENSION MIN/MAX Front bumper to suction cup	450 MM / 1.450 MM	OPERATING HOURS On fully charged batteries	12 HOURS
LIFTING HEIGHT MIN/MAX Horizontal cups down	0 MM / 1.065 MM	CHARGING TIME	8-10 HOURS
LIFTING HEIGHT MIN/MAX Horizontal cups up	2.650 MM / 3.465 MM	SUITABLE FOR OUTDOOR USE Water resistant	YES
		INTEGRATED LIFTING EYE For lifting of the Winlet	YES

*² Optional

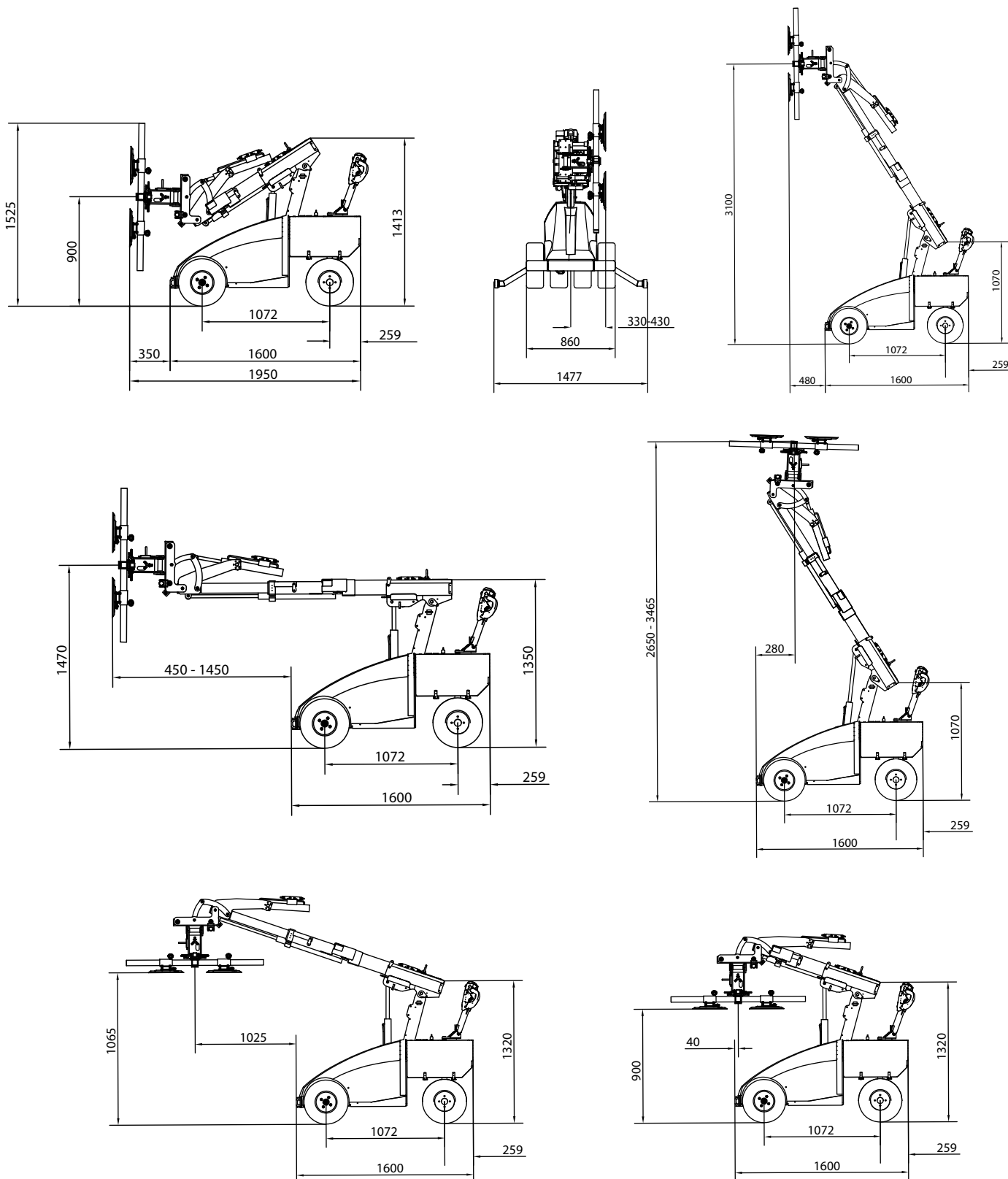
WINLET 400TL DHB/HS/HR MAX. LOAD/REACH kg.



*¹ The dimensions are indicative and may vary +/- 10mm

Winlet 400TL DHB/HS/HR

DIMENSIONS*



*The dimensions are indicative and may vary +/- 10mm

The company GMV A/S was founded in 1988. In 2008, the company was taken over by Jesper Faurskov and Erik Pedersen. The vision of GMV is:

GMV must be at the cutting edge of market needs, and match these needs by developing unique technical solutions which aid heavy manual lifting with modern design.

A HEALTHY WORKING ENVIRONMENT MEANS HAPPY EMPLOYEES

GMV provides solutions for heavy manual lifting for the building and manufacturing industries.

CONSULTING, ENGINEERING AND PLANNING

We are with you from start to finish. We provide qualified advice and listen to your needs.

THE MARKETS BEST SOLUTIONS AND PRODUCT BRANDS

We provide innovative solutions that suit your needs.

LOCAL COMPANY WITH GLOBAL SALES

With our strong dealer network, we sell products world-wide.

EDUCATION AND SERVICE

Our highly trained experts guide and instruct distributors and end users.

ASSEMBLY AND MAINTENANCE CHECK

Our strong team is responsible for assembly and service, both locally and internationally.

PRODUCT DEVELOPMENT

GMV develops products from scratch. Focus is always on a good working environment.

MODERN INDUSTRIAL DESIGN

Our award-winning Danish design is combined with unique technical solutions for both the building and manufacturing industries.

DANISH PRODUCTION LINE ACCORDING TO EUROPEAN STANDARDS

We have our own local production and use local suppliers. This ensures local jobs and high quality.

THOROUGH FACTORY TESTING AND DOCUMENTATION

All of our products undergo rigorous testing before leaving the factory and comprehensive technical documentation always accompanies our products.

TRAINING FOR SERVICE TECHNICIANS

To ensure that our products last as long as possible and that local laws are respected, we conduct thorough training with your service technicians - both nationally and internationally.



GMV A/S
Industriparken 1
DK - 7182 Bredsten

Tel: +45 7573 8247
E-mail: post@gmvas.dk